

# JONIX up in

USE AND MAINTENANCE MANUAL



**SANITIZING  
AND AIR PURIFICATION DEVICE ACTIVE**

These instructions are the translation of the italian original ones. No liability is taken for translations into other languages that do not conform to the original meaning. JONIX srl reserves every right concerning this manual, including the right to make any necessary change or improvement to its products and to the manual at any time and without notice. It is forbidden to reproduce in full or in part this manual without JONIX srl's consent.

## TABLE OF CONTENTS

<b>1 - GENERAL INFORMATION</b>	<b>5</b>
1.1 - CE PLATE AND SERIAL NUMBER	5
1.2 - RESPONSIBILITY	5
1.3 - GENERAL SAFETY INDICATIONS, SYMBOLS AND DEFINITIONS	6
1.3.1 - General safety information	6
1.3.2 Symbols	6
1.3.3 - Definitions	7
<b>2 - WARNINGS AND GENERAL PROHIBITIONS</b>	<b>8</b>
<b>3 - THE OPERATING SYSTEM</b>	<b>11</b>
<b>4 - TECHNICAL DATA JONIX up in</b>	<b>12</b>
4.1 - COMPONENTS DESCRIPTION JONIX up in	12
4.1.1 - Technical characteristics JONIX up in	13
4.2 SPARE PARTS AVAILABLE ON ORDER	13
<b>5 - RECEPTION, TRANSPORT AND STORAGE</b>	<b>13</b>
5.1 - PACKAGING	13
5.2 - HANDLING AND TRANSPORT	13
5.3 - INSPECTION UPON RECEPTION	14
5.4 - STORAGE	14
<b>6 - INSTALLATION AND COMMISSIONING</b>	<b>14</b>
6.1 - SAFETY INSTRUCTIONS	14
6.2 - GETTING STARTED	16
6.3 - CHOOSING THE INSTALLATION SITE	17
6.3.1 - Position of the operator	18
6.4 - ELECTRICAL CONNECTIONS	19
6.5 - ELECTRIC POWER SUPPLY	19
6.6 - INSTALLING THE DEVICE	20
6.6.1 - Type of fixing	23
6.7 - USING THE DEVICE	24
6.8 - FIRST START CHECKS	25
<b>7 - SPECIFIC APPLICATION FOR LIFTS AND LIFTING EQUIPMENT</b>	<b>25</b>
<b>8 - MANAGEMENT OF JONIX up in AND OPERATING LOGIC</b>	<b>28</b>
8.1 - ELECTRONIC BOARD INPUT/OUTPUT	28
8.2 - MANAGED COMPONENTS, OPERATING LOGIC AND DEFAULT SETTINGS	29
8.2.1 - ON-OFF switch (power supply selector switch)	29
8.2.2 - Alarm reset button	29
8.2.3 - External alarm input I5	29
8.2.4 - Fan	29
8.2.5 - Ionizer function	30
8.2.6 - Default settings	31
8.3 - ALARM SIGNAL	31

<b>9 - DISPLAY EVO optional</b>	<b>32</b>
9.1 - DESCRIPTION OF THE OPERATION KEYS	32
9.1.1 - Main screen	33
9.1.2 - Display hours of operation of the ionizing tube	33
9.1.3 - Adjustment menu	34
<b>10 - MAINTENANCE</b>	<b>35</b>
10.1 - WARNINGS	35
10.2 - ROUTINE MAINTENANCE	35
10.2.1 - Cleaning ionizing tubes	36
10.2.2 - Cleaning the Filter	40
10.2.3 - External cleaning of the device	43
10.2.4 - Replacing the ionizing tube	43
10.3 - SPECIAL MAINTENANCE	47
<b>11 - OPERATIONAL CHECK AND TROUBLESHOOTING (DIAGNOSTICS)</b>	<b>48</b>
11.1 - DIAGNOSTICS	48
11.2 - GENERAL DIAGNOSTIC PROVISIONS	48
<b>12 - DISPOSAL</b>	<b>49</b>
<b>NOTES</b>	<b>49</b>
<b>WARRANTY CONDITIONS</b>	<b>50</b>
<b>DECLARATION OF CE CONFORMITY</b>	<b>51</b>
<b>ANNEXES</b>	<b>52</b>

Thank you purchasing the JONIX up in device.

This manual contains the information and anything deemed necessary for the transport, installation, use and maintenance of the active sanitizing and air purification device JONIX up in. Improper installation of the device and/or failure to comply with the instructions in this manual, may void the warranty that the Manufacturer issues for its products.

The Manufacturer is not liable for any direct and/or indirect damage caused by incorrect installation or damage caused by units installed by inexperienced and/or unauthorised staff. At the time of purchase, check that the device is intact and complete.

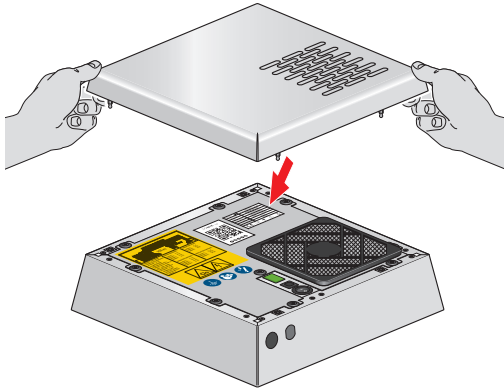
The Manufacturer declines any liability in case of personal injury or property damage resulting from any improper use of the device or from the failure to observe the use and safety instructions specified in this manual. In any such case, any warranty claim will be void.

Any complaints must be submitted in writing within **8 days** of receiving the goods.






For more information, manual downloads or video tutorials please visit [www.jonixair.com](http://www.jonixair.com).

## 1 - GENERAL INFORMATION

### 1.1 CE PLATE AND SERIAL NUMBER



The device described in this manual is provided with a nameplate identifying it and the Manufacturer.

Manufacturer	JONIX S.R.L. Viale Spagna, 31/33 35020 Tribano (PD)
Product name	<b>JONIX UP IN</b>
Model	70JONIXUPIN
Serial number	000000000000
Power Supply	230V / ~1 / 50/60Hz
Full load ampere (A)	0,3 A
Year of production	2020
    	

#### IMPORTANT WARNING

The JONIX up in device is designed and made to sanitise the air in residential and industrial processing environments that are incompatible with toxic and flammable gases. It is therefore strictly forbidden to use the device in environments where the air is mixed with and/or altered by other gaseous compounds and/or solid particles. Using the device for purposes other than those intended and that do not comply with those described in this manual will immediately relieve Manufacturer and its distributors from any direct and/or indirect liability.

### 1.2 RESPONSIBILITY

Failure to comply with the instructions contained in this Operation and Maintenance Manual releases the Manufacturer from any liability. For any data not included or not deducible from the following pages it is recommended to consult the Manufacturer directly.

JONIX srl  
Viale Spagna 31/33 35020 Tribano - PD - Italy <http://www.jonixair.com>

In particular, if the maintenance of the device is carried out in a manner that does not comply with the instructions provided, or in any case in such a way as to compromise its integrity or modify its characteristics, JONIX srl will be relieved of any responsibility regarding the safety of people, things, animals and the faulty operation of the devices.

### 1.3 GENERAL SAFETY INSTRUCTIONS, SYMBOLS AND DEFINITIONS

#### 1.3.1 General safety instructions

Any intervention, of whatever nature, on the device must be carried out by prior and careful reading of this manual in all its parts, with particular reference to SAFETY.

It is essential, therefore, that the machine is used in accordance with its intended use and with this manual. This manual has been drawn up to provide the necessary information for personnel dedicated to the use and maintenance of the device, until its sale or disposal. It must therefore always be available to the staff who, before carrying out any operation on the device, must read and assimilate all the information contained therein.

#### 1.3.2 Symbols

Please pay utmost attention to the following symbols and their meaning. They emphasise specific information, such as:



**OBLIGATION:** This symbol draws attention to a specific obligation or action to be implemented with obligation.



**WARNING:** It refers to integrations or suggestions concerning the proper use of the device.



**HAZARD:** It refers to dangerous situations that may result from the use of the device, in order to ensure personal safety.



**FORBIDDEN:** This symbol refers to operations that must be avoided under any circumstances, and hence forbidden.



**HIGH VOLTAGE HAZARD!**

Do not open or remove any doors or protections before disconnecting the voltage supply.



**OBLIGATION TO USE PROTECTIVE GLOVES**

Use adequate hand protection in addition to other personal protective equipment suitable for the place and the operations to be carried out.



**WASTE ELECTRICAL AND ELECTRONIC EQUIPMENT.**

The crossed-out bin symbol on the label on the appliance indicates that this product complies with the regulations on waste electrical and electronic equipment. The abandonment of the equipment in the environment or its unauthorised disposal is punishable by law.

### 1.3.3 Definitions

---

Below are the definitions of the main terms used in the user manual.

#### **MANUFACTURER**

Individual or juridical person who designs and/or manufactures the device and is responsible for its conformity for the purpose of placing it on the market under his own name or trademark.

#### **SUPPLIER**

Any professional operator in the marketing chain.

#### **USER**

Person, organisation or company who or which has purchased or rented the device and is going to use it for the intended purposes.

#### **USER/OPERATOR**

Individual who has been authorised by the user to operate the device.

#### **QUALIFIED STAFF**

Individuals who, on the basis of their professional training, experience, knowledge of relevant regulations and accident prevention regulations, are able to assess the work entrusted to them and recognize and avoid any hazards.

#### **AUTHORIZED PERSONNEL**

Specialised personnel, assigned by the user to carry out certain tasks.

#### **HAZARD**

Source of possible injury or damage to health and safety.

#### **RISK**

Combination of probability and severity of possible injury or damage to health and safety in a hazardous situation.

#### **DANGEROUS ZONE**

Any area within and/or close to a machine in which a person is exposed to a risk.

#### **PROTECTIONS**

Safety measures consisting of the use of specific technical means (guards and safety devices) to protect users, users and operators from hazards.

#### **REPAIR**

Element of a machine used specifically to provide protection by means of a physical barrier; depending on its construction, it may be called a headphone, cover, screen, door, fence, casing, segregation, etc.

#### **PROTECTIVE DEVICE**

Device (other than a guard) that eliminates or reduces the risk; it can be used alone or associated with a guard.

## **ROUTINE MAINTENANCE**

Type of maintenance interventions during the life cycle, suitable for:

- maintain the original integrity of the goods;
- contain or restore the efficiency of the goods;
- contain the normal degradation of use;
- ensure the useful life of the goods;
- cope with accidental events.

## **SPECIAL MAINTENANCE**

Type of non-recurring and high cost interventions, compared to the replacement value of the goods and the annual cost of routine maintenance of the same.

## **NON THERMAL PLASMA GENERATOR NTP (Non Thermal Plasma) or IONIZING TUBE**

Electric field generator that transforms gas into plasma with high chemical oxidation power able to oxidize and break down pollutants, bacteria, moulds, viruses and odours.

## **2 - WARNINGS AND GENERAL PROHIBITIONS**



### **READ THE INSTRUCTIONS BEFORE ANY OPERATION**

Before starting any operation, it is mandatory to read this manual and apply all its instructions. The competent person in charge is obliged, according to the regulations in force, to carefully read ALL the contents of this User and Maintenance Manual and to have it read by the maintenance technicians in charge, for the parts that are their responsibility.



This Use and Maintenance Manual is an integral part of the device and must therefore be kept with care and must ALWAYS accompany the device even if it is transferred to another owner or user or transferred to another facility. In case of damage or loss, request another copy from JONIX srl or download the document from [www.jonixair.com](http://www.jonixair.com).



It is the user's responsibility to ensure that, if this document is modified by the Manufacturer, only the updated versions of the Manual are actually present at the points of use.



Repair or maintenance work must be carried out by personnel authorised by JONIX srl or by qualified personnel in accordance with this user and maintenance manual. Do not alter or tamper with the device as it can lead to hazards and the manufacturer shall not be liable for any damage caused.





The transport, handling, installation, commissioning and decommissioning of this product must only be performed in accordance with the requirements and instructions specified in this manual.



Any liability of JONIX srl is excluded for damage caused to persons, animals or property, whether due to transport, installation, adjustment, maintenance, decommissioning or misuse.

Please note that the use of products that require electricity involves the observance of some crucial safety rules such as:



This device is not intended for use by people with reduced physical, mental or sensory abilities or lack of experience and knowledge.



This device is not a toy, make sure it is placed out of the reach of children and take precautions so that children do not play with the device.



Do not touch the device if you are barefoot and with parts of the body that are wet or damp.



Any maintenance or cleaning operation before disconnecting the device from the power supply is prohibited.



It is forbidden to modify the safety and/or adjustment devices.



Do not pull, detach or twist the electrical wires coming out of the device, even when it is disconnected from the mains.



It is forbidden to get on and/or sit on the device. It is forbidden to place objects, animals or people on the device.



It is forbidden to spray or throw water or other liquids directly inside the device, even in case of fire.








It is forbidden to open the access panels to the internal parts of the unit without removing the power supply and making sure that the unit cannot be accidentally powered.

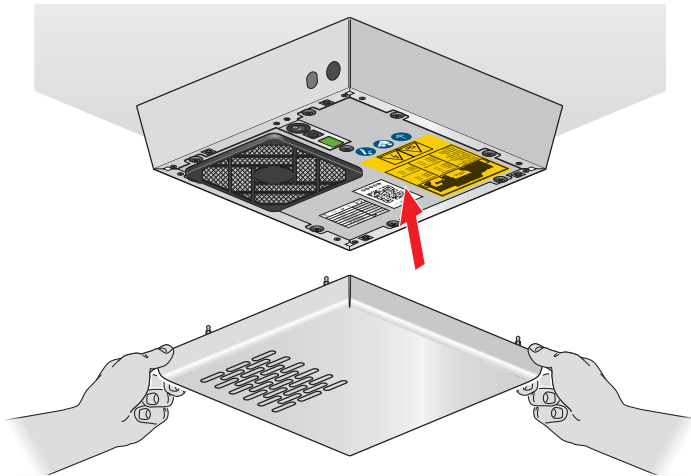


Do not dispose of or leave the packaging material within reach of children because it can be potentially dangerous.

## 2.1 SAFETY SIGNS

Check the condition of the safety pictograms periodically and replace them if necessary. The safety signs on the machine are as follows:

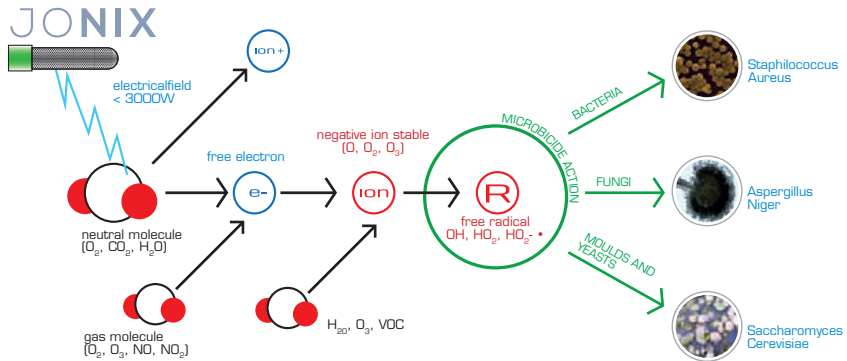
Pictogram 1	Pictogram 2	Pictogram 3	Pictogram 4	Pictogram 5
				
<b>ELECTRICAL VOLTAGE HAZARD</b>	<b>OBLIGATION TO READ THE INSTRUCTION MANUAL</b>	<b>OBLIGATION TO DISCONNECT VOLTAGE BEFORE MAINTENANCE</b>	<b>MOVING PARTS HAZARD</b>	<b>EARTHING OBLIGATION</b>



### 3 - THE OPERATING SYSTEM

This sanitizing device, exploiting the physical phenomenon of ionization, promotes the controlled formation of particular electrically charged species in the air through an electrostatic field. The latter simulates a natural process that normally occurs through solar radiation, mechanically or by other physical phenomena.

The particular ionic species produced are proven to be particularly effective as sanitizing agents in air and on surfaces, moreover they are scientifically and historically proven to be beneficial on people, especially the negatively electrically charged species (i.e. those derived from single or small groups of molecules receiving an electron).



The JONIX up in device:

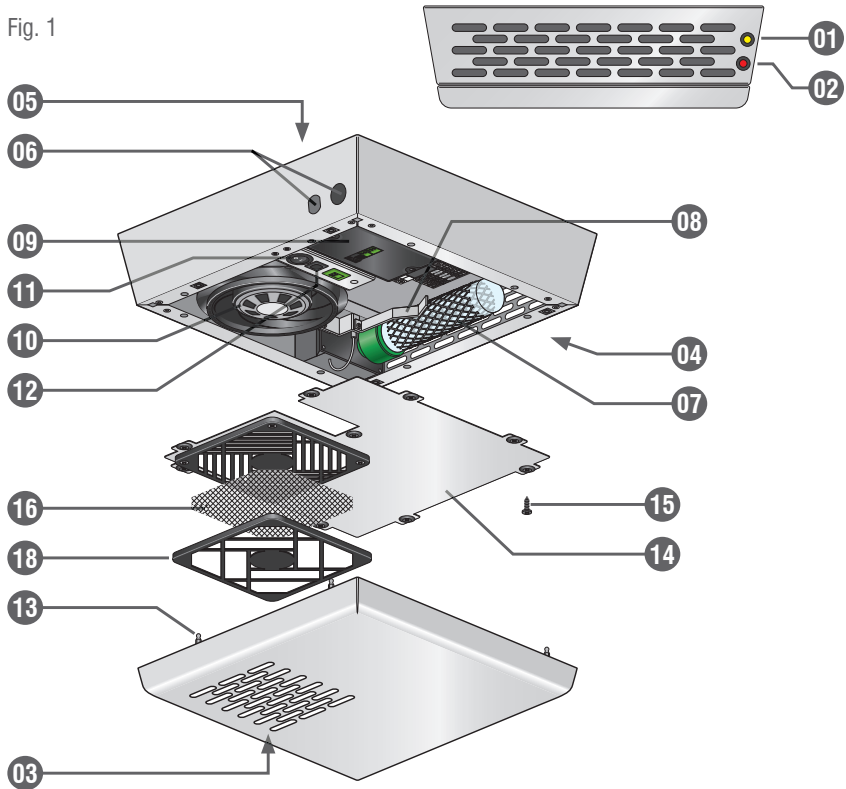
- constantly reduces and eliminates bacterial loads in the air and on indoor surfaces;
- constantly decomposes volatile organic compounds (VOCs);
- it eliminates odours;
- is suitable for environments that need to reduce air contamination.

The sanitizing activity of JONIX up in is compatible with the presence of people and animals.

The device JONIX up in has **been specifically designed to be placed inside elevators, but**, due to its compact shape and its sanitizing action, it can be used in many other rooms with reduced dimensions such as changing rooms, bathrooms, closets, waiting rooms of medical and veterinary offices, cold rooms, food processing and packaging rooms, etc..

**4 - TECHNICAL DATA**

Fig. 1



**4.1 COMPONENTS DESCRIPTION JONIX up in**

01 Led signalling device in operation (yellow led)	10 Fan
02 Alarm and/or maintenance signalling led (red led)	11 ON/OFF switch (I=ON, 0=OFF)
03 Room air inlet	12 ALARM RESET button
04 Ionized air outlet	13 External cover fixing pins (n°4)
05 Ceiling or wall fixing slots (n°3)	14 Closing plate
06 Cable glands for power supply and signal	15 Screws for closing plate fixing (n°9)
07 Ionizing tube	16 AISI 304 stainless steel filter
08 Ionizing tube grounding bracket	17 External cover
09 Electronic connection board	18 Filter cover

## 4.1.1 Technical features JONIX up in

The technical characteristics and relevant data are shown on the nameplate together with the serial number identifying the device.

Model	Code product	Power supply	Max absorbed current [A]	Dimensions L x P x A [mm]	Weight [kg]	(*) Flow rate treated air [m³/h]
JONIX up in	JX03000055	230 V / ~1 / 50Hz	0.29	300 x 300 x 93	4.5	V1 = 35 V2 = 60 V3 = 90

(\*): Default settings.

## 4.2 Spare parts available on order

The technical characteristics and relevant data are shown on the nameplate together with the serial number identifying the device.

Code	Description	Notes
70CONDITION175	175 IONIZING TUBE REPLACEMENT KIT	No. 1 ionizing tube of 175

# 5 - RECEPTION, TRANSPORT AND STORAGE

## 5.1 PACKAGING

The JONIX up in is shipped in special protective packaging that must be kept intact until installation. The materials that were not installed for technical requirements are supplied with suitable enclosure secured to the inside or outside of the device itself.

The package includes:

- JONIX up in.
- No.1 Ionizing tube
- Operating and maintenance manual.

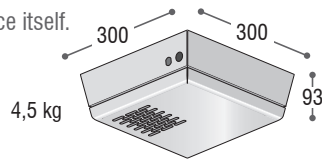


Fig. 2

## 5.2 HANDLING AND TRANSPORT

Unless otherwise agreed in writing in advance, no other material or goods shall be placed on top of the devices.



**The carrier is responsible for securing the load on the means of transport.**

JONIX srl declines any responsibility in case of damage caused by poorly executed loads by the carrier.



To handle the device, use appropriate means, in good condition and suitable capacity, depending on the weight, as required by Directive 89/391/EEC and subsequent amendments.



Please take great care while unloading and positioning the devices, to prevent damaging the casing or components. Always make sure that the load is stable. Avoid uncontrolled rotations. Lifting assistance must, if necessary, be carried out with rods, levers, grappling hooks without ever using hands alone.



During lifting and/or transport and/or handling operations, provide for appropriate signalling and confinement of the dangerous zone, signalling the prohibition of access to the dangerous zone by unauthorised personnel.

### 5.3 INSPECTION UPON RECEPTION

---

When you receive the device please check all its parts, in order to make sure that it has not been damaged during transport.

Any damage must be reported to the carrier, by filling in the relevant section on the delivery note and specifying the type of damage.



Any type of complaint must be sent in writing within eight days from receiving the goods.

### 5.4 STORAGE

---



In case of prolonged storage before installation, the device must be protected from dust, weather and kept away from heat and vibration. Do not allow the device to come into contact with corrosive substances.

JONIX srl declines all liability for damage due to poor handling, transport and storage.

## 6 - INSTALLATION AND COMMISSIONING



The Manufacturer disclaims any liability for failure to comply with the safety and prevention standards as described below.

The Manufacturer also disclaims any liability for damage caused by improper use of devices and/or alterations carried out without prior authorisation.

### 6.1 SAFETY INSTRUCTIONS

---

- The device must be installed in strict accordance with the instructions contained in this manual.
- The installation must be carried out by specialised personnel.
- During installation operations, use suitable and accident prevention clothing: gloves, accident prevention shoes in accordance with EU Regulation 2016/425 and the provisions of the site safety plan, the company's risk assessment document or other safety document relating to the installation site.

- While performing installation, operate in full safety and in a clean environment clear of obstructions.
- During each phase of use and/or maintenance it is forbidden to operate wearing loose or dangling clothes, long loose hair, jewellery, chains and anything that could be a danger of entanglement.
- **Before switching the device on check the integrity of the various components and of the electrical mains to which it is connected, making sure that it is fitted with a circuit breaker upstream of the power line.**
- Before putting the device into operation, check that it has been connected to an effective earthing system.
- Do not service or clean the device without first unplugging it from the mains.
- Worn or damaged parts must only be repaired or replaced by qualified staff and by following the instructions given in this manual.
- Spare parts must meet the requirements defined by the Manufacturer.
- Do not insert objects of any kind into the device, as coming into contact with live parts or electrical terminals may cause fires or electric shocks. In case of maintenance, check that you have removed all tools and objects before closing the panels and restarting the device.
- Comply with the laws in force in the country in which the device is installed, regarding the use and disposal of the packaging and products used for cleaning and servicing the device; you should also observe the recommendations given by the manufacturers of such products.
- In the event of decommissioning or disposing of the MIC device, follow the anti-pollution regulations set out by the country in which the device is installed.
- **Use only the power supply indicated on the nameplate. If you are not sure about the type of power supply available, ask your local retailer or electricity provider for assistance.**
- Do not spill water or other liquids on the device.
- Place the device so that the power cable cannot be stepped on and/or does not cause tripping
- Do not connect the device to power supply lines connected to any other electric utilities or devices.
- Do not touch the inside of the device, unless otherwise specified in the instructions contained in this manual.
- Never force the components when installing or performing maintenance operations: although it is built with high strength materials, the parts of the device can be damaged if handled incorrectly.
- Do not try to perform maintenance work on the device, except where specified in this manual. Opening or removing the outer casing may expose you to dangerous live parts or may involve other risks. All maintenance work must be carried out by authorised staff, except where specified in this manual.
- Do not tamper with or modify the device.
- Do not perform maintenance or other operations in low light and visibility conditions.

- Do not modify the functional and performance components of the device.
- Do not tamper with the safety devices.
- Do not use the machine after maintenance without making sure it is safe. Check that all components are correctly restored before restarting it.
- Do not remove or make illegible the safety, hazard, and mandatory signs on the device.
- Do not use water or liquids to put out a fire.
- Do not allow unauthorized personnel to access the internal parts of the device.
- The device has slots and openings for ventilation, do not obstruct or cover them, even partially.
- Always leave the necessary space for ventilation in front of cracks and openings, as indicated in this manual.
- Disconnect the device from the power supply and contact the Manufacturer or a dealer for service when you fall into any of the following cases:
  - the internal parts of the device have come into contact with water or other liquids of any kind;
  - A malfunction persists despite all the installation and/or maintenance procedures having been performed properly.
  - The power supply cable is damaged or worn.



**ATTENTION!** During installation, check that the fixing holes made in walls and/or ceilings do not interfere with electrical cables, pipes and other components of existing systems and equipment.



**IMPORTANT:** The installer and the user, when using the JONIX up in device, must take into account and solve all the other types of risk associated with the system. For example, risks arising from foreign bodies getting into the device or risks due to dangerous flammable or toxic gases at high temperature.



**ATTENTION!** Any use other than that specified herein shall be deemed to be incorrect.

## 6.2 GETTING STARTED

---



- Check that the various components of the device are fully intact.
- Check that the documentation and any accessories for installation are contained in the package.



- Carry the device in its packaging as close to the installation site as possible.
- Do not rest weights or tools on the device, or place it on an unstable surface.



### 6.3 CHOOSING THE INSTALLATION SITE



- Do not put the device in places where there are flammable gases, acidic, aggressive and corrosive substances that can damage the various components beyond repair.
- Provide a minimum clearance, in order to install the device and carry out routine and special maintenance.



The environment in which the device is placed must have the following characteristics:

- air temperature between 0°C and 40°C;
- relative air humidity below 80%.



Use suitable devices for lifting and unpacking the device.

- Check that the fixing surface is able to support the weight of the device.
- The device is not equipped with its own lighting, check that the ambient lighting is sufficient, especially for maintenance operations.
- Do not place the device outside.



**Do not place the device in environments where there are flammable gases, acidic, aggressive and corrosive substances that could damage it.**



**The device must not be installed in an explosive environment due to the presence of electrical and electronic equipment not specially designed.**

Provide adequate **technical space** to guarantee the installation and ordinary and extraordinary maintenance operations.

Provide a clearance of at least 800 mm near the ambient air intake and the delivery grid of the ionized flow and 20 mm for the other sides.

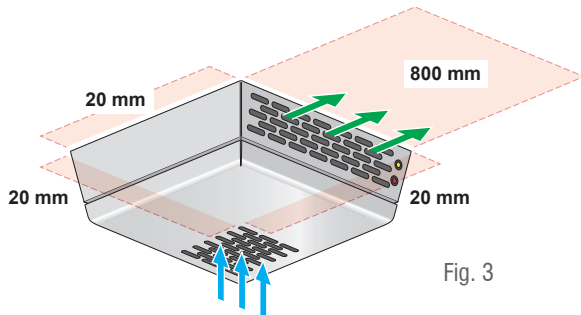


Fig. 3



The JONIX up in device has been specifically designed to be placed inside lifts and lifting systems, for this type of applications, in addition to all the general prescriptions, please refer also to chapter 7 "SPECIFIC APPLICATION FOR LIFTS AND LIFTING SYSTEMS".

### 6.3.1 Position of the operator

---

During operation of the unit, the presence of the operator in the vicinity of the device is not required. For start-up, shutdown and maintenance, the operator's position must access the external cover as shown in the figure.

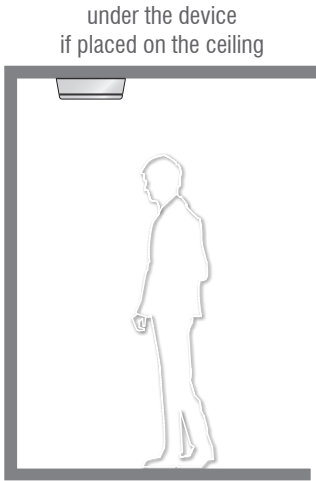


Fig. 4A

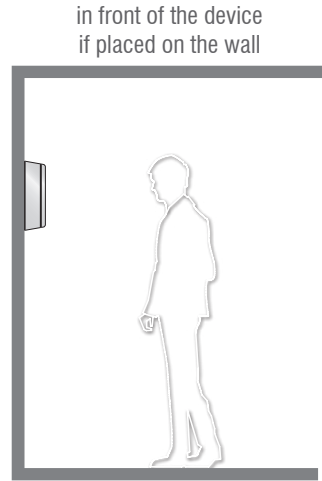


Fig. 4B

Position of the operator for switching on, switching off and maintenance operations.

---

## 6.4 ELECTRICAL CONNECTIONS



**ATTENTION! BEFORE STARTING ANY OPERATION, MAKE SURE THAT THE GENERAL POWER SUPPLY LINE IS DISCONNECTED AND THAT THE DEVICE CANNOT BE ACCIDENTALLY POWERED!**

- The electrical connections must be carried out following the instructions provided in this manual.
- **Make sure that voltage and frequency of the electric line correspond to those provided on the name plate.**



**ATTENTION!**

**Using a power supply that does not meet the requirements of the device may result in damage to the device or some of its parts.**

- The electrical mains of the JONIX up in device must be used for the device only, there must be no other devices connected to the same power line. Do not use adapters, power strips and/or extension cords.
- Make the connection with cables of suitable section in relation to the power input and in compliance with the regulations in force.
- **The installer must see to it to assemble the device as close to the power disconnecter as possible, according to standards in force and as far as necessary to protect the electrical parts.**
- Connect the device to an effective earthing outlet.



**ATTENTION!**

**Electrical connections must be carried out by qualified and authorized personnel.**

## 6.5 ELECTRIC POWER SUPPLY

The JONIX up in device is equipped with a dedicated line at the electronic board. Specialized and authorized personnel of the user must pass a power cable of suitable section composed of F, N and T inside the unit and connect it to a thermal-magnetic circuit breaker as shown in the attached wiring diagram.



**ATTENTION!**

**Provide the connection to the network with a cable of suitable section composed of F, N and T.**



**Before making any connections, ALWAYS make sure the mains voltage complies with what is shown on the plate.**



**ATTENTION!**

**It is recommended to check that the energy delivered is stable. Otherwise a voltage stabilizer must be installed upstream.**

Power cables are NOT supplied with the device.

## 6.6 INSTALLING THE DEVICE

The JONIX up in device has been designed to be fixed directly to the ceiling or wall through the appropriate fixing holes located on the support plate.

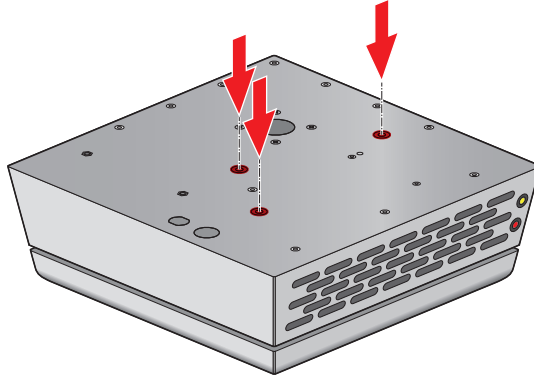


Fig. 5



### Before installation:

- make sure that there is enough space to allow air flow;
- make sure that there is enough space for maintenance;
- make sure that there are no existing sub-services, installations and equipment that could be damaged by the fixing holes of the device.



### ATTENTION!

Choose the fixing system suitable for the type of ceiling or wall also considering the weight and shape of the device.  
Carefully check the stability of the device and the tightness of the supporting ceiling or wall after installation.

The fixing system and/or fixing screws are NOT included in the scope of delivery of the JONIX up in. Use stainless steel fastening systems and screws.

Fig. 06: The external cover is fixed with interlocking pins. Pull by grasping the cover sideways to remove it.

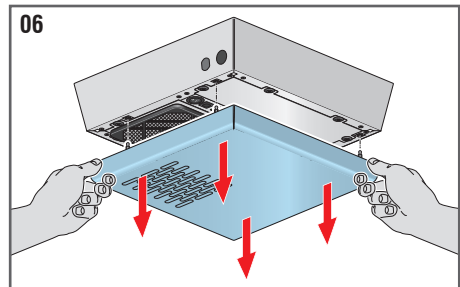


Fig. 07: Unscrew the fixing screws and remove the closing plate. Attention, the filter is fixed to the closing plate, make sure not to damage it.

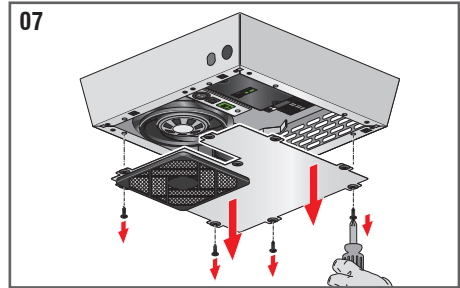


Fig. 08 Attach the device to the ceiling or to wall using the three holes provided. Choose the fixing system suitable for the type of ceiling or wall.

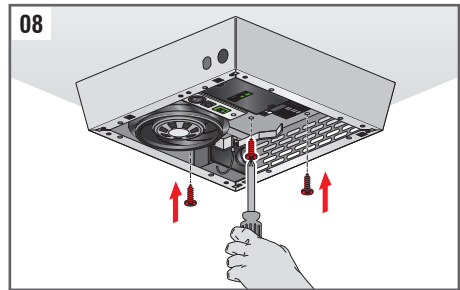


Fig. 09: Connect the device to the power line. Use an appropriately sized electrical cable. Go through the casing with the appropriate cable gland. Wire the cable according to the enclosed wiring diagram.



**WARNING:** electrical cable NOT included in the supply of the device.

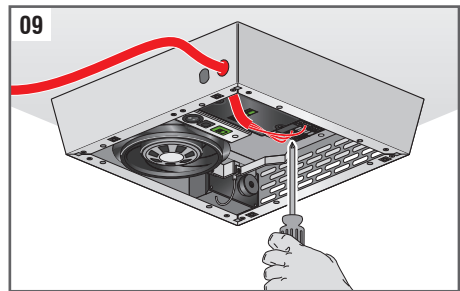


Fig. 10: the electronic board can give an external signal to be connected to a control and signalling device. If applicable, connect the signal cable to the electronic board. Go through the housing of the device with the appropriate cable gland. Wire the signal cable according to the enclosed wiring diagram.



**WARNING:** signal cable NOT included in the supply of the device.

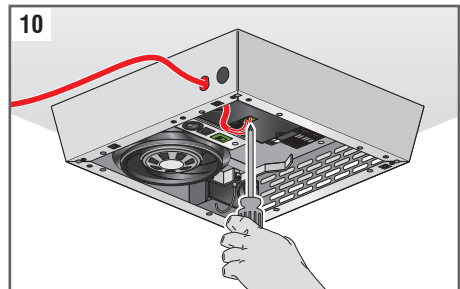
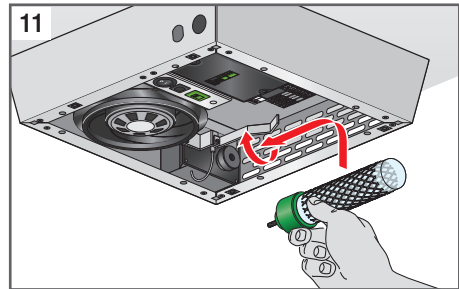


Fig. 11: Take the ionizing tube, remove the bubble wrap and check the integrity of the glass. Gently tighten the ionizing tube by grasping it at the base (green part). If the operation is difficult, pull the earthing bracket slightly so that it does not make contact with the pipe surface.



**ATTENTION:** do not overtighten the screw after reaching its end stop.



Check that the earthing spring is in contact with the external mesh once the ionizing tubes have been screwed back into place. Otherwise contact the manufacturer.

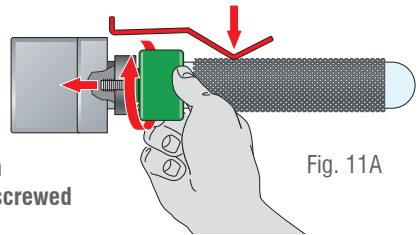


Fig. 11A

Fig. 12: Remount the locking plate by screwing in the fixing screws.

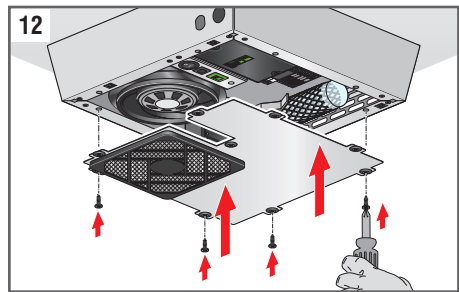


Fig. 13: Set the switch to ON to check for voltage in the device. If the installation is correct, the yellow LED lights up and the red alarm signalling LED does not light up.

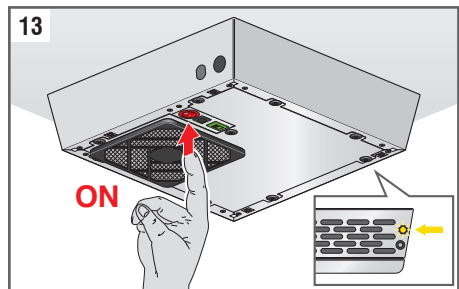


Fig. 14: Remove the protective film from the external cover.

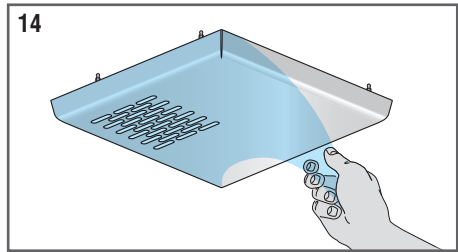
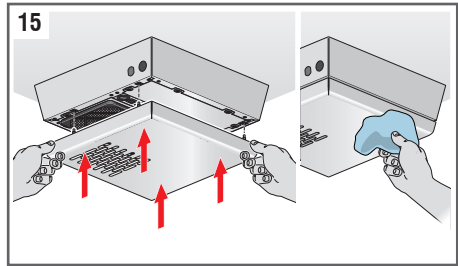


Fig. 15: Replace the external cover by fixing it to the pins.



**ATTENTION: The perforated ambient air inlet grid must be positioned at the filter.**



Clean the outside of the device with a damp microfiber cloth.



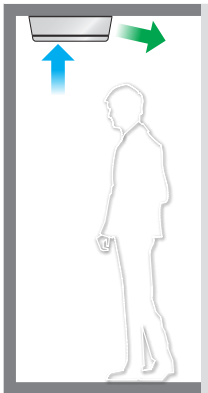
**See indications Fig. 42 and 53 "important cleaning notes"**

## 6.6.1 Type of fixing

JONIX up in can be fixed to both ceiling and vertical wall:

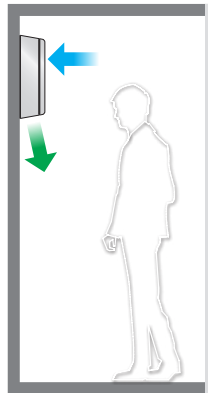
➡ : air present in the environment. - ➡ : ionized air flow.

Fig. 16



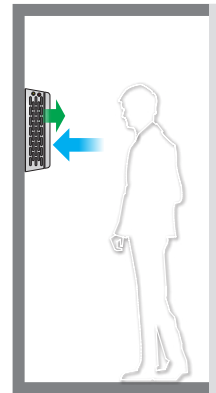
### CEILING FIXING

(only this configuration is possible for lifts and lifting equipment)



### WALL FIXING

Vertical ionized air supply (no for lifts and lifting equipment)



### WALL FIXING

Horizontal ionized air supply (no for lifts and lifting equipment)

## 6.7 USING THE DEVICE

Fig. 17: Remove the external cover which is fixed with interlocking pins. Pull by grasping the cover sideways to remove it.

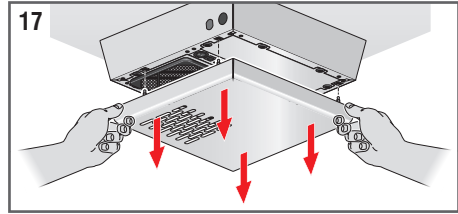


Fig. 18: To turn the device on, set the O/I switch to the I position. The Yellow led lights up, you can hear a light sizzle coming from the ionizing tube and you can feel the air flow generated by the fan.

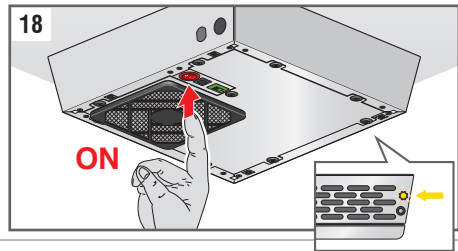
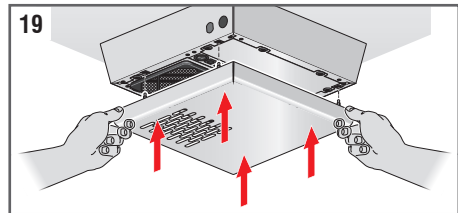


Fig. 19: Replace the external cover by fixing it to the pins.



**ATTENTION: The perforated ambient air inlet grid must be positioned at the filter.**



The table below offers a generic overview of the times needed to reach and maintain the maximum sanitisation level, depending on the size of the relevant room.

Volume ambient (m <sup>3</sup> )	Time needed for sanitation	Recommended daily operating time *
15	30 min	3 h
30	1 h	3 h
45	2 h	4 h
60	6 h	8 h
75	12 h	12 h
90	24 h	24 h
105	24 h	24 h

\* The recommended daily operating times may be changed in case of specific needs. We recommend avoiding extending the operating hours beyond the values indicated in this table.



## 6.8 FIRST START CHECKS

At first start-up, the units should be subjected to at least the following checks:

- check the integrity and stability of the JONIX up in device as a whole;
- check that all panels and covers are closed and securely fastened;
- check that the mains voltage is correct in relation to what is indicated on the nameplate of the device;
- check that the alarm led is off (red led);
- check that the power supply led is on (yellow led);
- check that the air flow is regular;
- check that you can hear the slight sizzle of the ionizing tube.



**Repeat the checks carried out at the first start-up even after each extended shutdown period and after maintenance.**

## 7 - SPECIFIC APPLICATION FOR LIFTS AND LIFTING EQUIPMENT

The JONIX up in device has been specifically designed to be placed inside elevators and does not create any kind of problem for the health of animals and people, including the elderly, children and pregnant women.



**For further information regarding the operating principle of non-thermal plasma generators, please contact the Manufacturer directly and consult the website [www.jonixair.com](http://www.jonixair.com).**

Due to the peculiarity of this environment and the specific safety regulations to which lifts are subject, further instructions are given below for the installation, use and maintenance of JONIX up in in lifting systems.

The installation of JONIX up in lifting systems must comply with the specific regulations in force in the country of installation and **must not interfere with the safety components of the lift and lifting systems**. In particular, for Italy, Directive 2014/33/EU for the harmonization of the laws of the Member States relating to lifts and safety components for lifts and DPR 162/99 as amended and supplemented must be respected.

The installation and maintenance of the device JONIXup in must be carried out by a qualified and specialized lift maintainer according to the regulations in force in the country of installation. In particular, for Italy, Presidential Decree 23/2017 provides that the owner of a lift system or his legal representative must entrust the maintenance of the entire lift system to a person with a certificate of competency or a specialised firm or a Community operator with an equivalent specialisation who must provide for the maintenance of the installation and its normal operation by means of authorised personnel. The owner of a lift system or his legal representative must have the lift system JONIX up indoors installed and maintained by the maintainer or by the specialized company to which the whole lift system is entrusted, or by another specialized company in agreement with the owner of the existing contract.



Please note that the owner or his legal representative is responsible for the lift system as a whole.

## IMPORTANT NOTES OF INSTALLATION OF THE DEVICE JONIX up in



The device must be installed **INTO** the cab



The device must be installed on the ceiling (not on the wall)



The device must not interfere with the internal controls of the lift (buttonhole)



If an escape hatch is present, the device must not prevent the hatch from opening and people from escaping



The device must not prevent the minimum lighting in the cabin provided by the regulations in force in the country of installation



The device must not interfere with the minimum living space for people provided for by the regulations in force in the country of installation



Please remember that in the cabin as living space must remain at least 2 meters free in height for people.



It is forbidden to spray or throw water or other liquids inside the device, even in case of fire. If sprinklers are present as a fire-fighting system for the elevator system, carefully assess the associated risk.

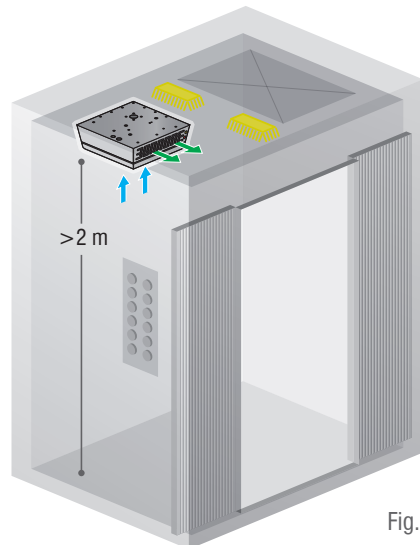


Fig. 20

For the ELECTRIC POWER SUPPLY of the device, in addition to the wiring diagram and the indications specified in paragraphs 6.4 "ELECTRICAL CONNECTIONS" and 6.5 "ELECTRIC POWER SUPPLY", consider that:



**It is forbidden to modify the electrical control panel of the lift system (lift). It is forbidden to modify the general electrical panel of the lift system (lift).**

**Create an electrical panel that is independent of the elevator system.** Protect the power supply line upstream from JONIX up in according to the regulations in force in the country of installation. ALWAYS make sure that the mains voltage is in accordance with the information on the nameplate. Connection cable not included in delivery.

**Refer to chapter 8 "JONIX up in MANAGEMENT AND OPERATION LOGIC" to set the fan speed and to set the functions of the ionizing device. For lifts and lifting systems it is recommended to set FUNCTION 4 to activate the ionizing device with external push button and to activate the external alarm input I5 to turn off the device and turn on the red signal led in case of lift blockage. Evaluate the fan speed setting according to the size of the lifting cab.**

For the INSTALLATION of JONIX up in, make sure to fix it firmly to the structure and not only to the cladding. The fixing system is excluded from the supply, choose the fixing system suitable for the structure and conformation of the lifting system, using stainless materials.



**WARNING! check the tightness of the fastening system and the stability of the JONIX up in device relation to the structure of the lift system, also considering the kinetic energy to which it is subjected during the movement, starts and stops of the lift.**



**Verify the absence of alarms and the stability of the JONIX up in device at every ordinary or extraordinary maintenance intervention on the lifting system.**

In case of doubt about the installation of JONIX up in contact the Manufacturer or the Distributor. Keep this Use and Maintenance Manual and the Declaration of Conformity at the disposal of Notified Bodies and Authorized Bodies during periodic or extraordinary inspections of the lifting equipment.

## 8 - MANAGEMENT OF JONIX up in E OPERATING LOGIC

The JONIX up in device is equipped with an electronic control board that allows to change the fan speed settings and to modify the functions available for the ionization device. These changes can be set:

- by modifying the wired internal jumpers directly on the circuit board to the factory default settings;
- by means of an external remote push button excluded from the supply which must be made by the installer.



**Any change must be carried out by qualified and authorized personnel.**

### 8.1 ELECTRONIC BOARD INPUT/OUTPUT

CONN.	FUNCTION
I1	ACTIVATION FUNCTION 1 - IONIZATION
I2	ACTIVATION FUNCTION 2 - IONIZATION
I3	ACTIVATION FUNCTION 3 - IONIZATION
I4	ACTIVATION FUNCTION 4 - IONIZATION
I5	EXTERNAL ALARM
I6	REMOTE ON/OFF
I7	SPEED 1 ACTIVATION - VENTILATION
I8	SPEED 2 ACTIVATION - VENTILATION
I9	SPEED 3 ACTIVATION - VENTILATION
I10	ALARM RESET
UP	-
O1	-
O2	-
O3	-
O4	-
O5	-
O6	LED ALARM ON/OFF
O7	ON/OFF IONIZATION
A1	MODULATING FAN 0-10V
A2	ON/OFF IONIZATION (0V = OFF; 10V = ON) for solid state relay command
A3	-

## 8.2 MANAGED COMPONENTS, OPERATING LOGIC AND FACTORY SETTINGS

### 8.2.1 on-off SWITCH (power supply selector switch)

0 = device OFF (I6 open - I10 open).

1 = device ON (I6 closed - I10 open).

### 8.2.2 Alarm reset button

With button pressed = alarm reset ((I6 open - I10 closed).

WARNING: the reset is performed if the button is pressed for 5 seconds (the contact is closed for 5 seconds).

### 8.2.3 External alarm input I5

It is possible to turn the JONIX up in device to OFF by connecting it to an external alarm:

I5 closed = no alarm.

I5 open = alarm.

If this alarm occurs, the device turns off and the red LED with slow flashing is activated (see paragraph 8.3 "ALARM SIGNALLING").

### 8.2.4 Fan

The fan is modulating type with 0-10V signal and the electronic card allows it to operate at constant speed with unit ON (on) according to the SPEED activated by a jumper on inputs I7-I8-I9 with the following defaults:

SPEED	JUMPER ON INPUT	VOLT SIGNAL FAN	AIR FLOW RATE
Speed 1	I7	3V (*)	35 m³/h
Speed 2	I8	5V (*)	60 m³/h
Speed 3	I9	7V (*)	90 m³/h



#### NOTES:

- if all the inputs are open, Speed 2 is activated;
- if several inputs are closed, Speed 2 is activated;
- if IONIZER FUNCTION 4 is active, ventilation function only during the ionization cycle.

(\*) The fan voltages at the three speeds are parameters that can be changed using the optional display (see chapter 9 "DISPLAY EVO optional").

### 8.2.5 Ionizer function

The electronic board allows to activate the ionizing tube with 4 different FUNCTIONS. Ionization is activated with unit ON (on) according to the FUNCTION activated by jumper on inputs I1-I2-I3-I4.

IONIZER FUNCTION	JUMPER ON INPUT	IONIZING TUBE ON/OFF TIMES
Function 1	I1	Always ON
Function 2	I2	T on = 5 seconds (*) T off = 10 seconds (*)
Function 3	I3	T on = 20 seconds (*) T off = 40 seconds (*)
Function 4 (**)	I4	Ionization activated with external push button, when the contact is closed the ionization works with Ton = 5 seconds (*), T off = 10 seconds (*) for 1 hour (*) To function properly, the contact MUST stay closed for at least 3 seconds

(\*) The ON/OFF times of the ionizing tube are parameters that can be changed using the optional display (see chapter 9 "DISPLAY EVO optional").

(\*\*) For FUNCTION 4:

- if the contact remains closed, at the end of the 1 hour cycle, the ionization remains switched off;
- the activation of a new cycle starts when a contact closure event occurs;
- If the contact is closed during an active cycle, a new cycle is activated;
- ventilation is active only during the ionization cycle.

### 8.2.6 Default settings

The JONIX up in device is factory preset for IONIZER FUNCTION 3 and FAN SPEED N°2. The digital input I5 corresponding to external alarm is factory preset as NOT active.

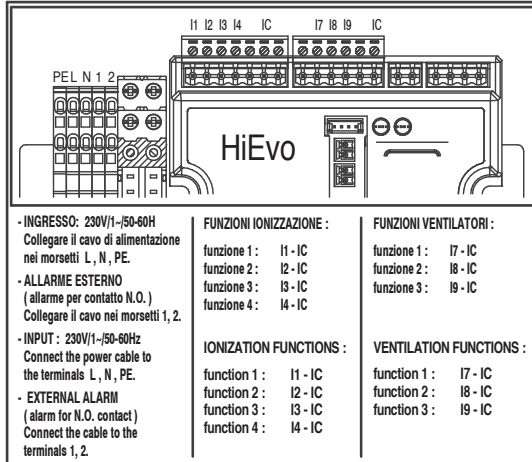


Fig. 21

### 8.3 WARNING

The management software of JONIX up in gives the possibility to identify some alarms by turning on the red LED flashing as shown in the following table.

RED LED	DESCRIPTION
RED LED OFF	Absence of alarms signalled by the device.
RED LED FLASHING SLOW Ton = 1 second / Toff = 5 seconds	Ionizing tube cleaning alarm that is activated when the maintenance hours threshold is reached (factory setting = 1000 h (*) can be modified with optional EVO display)
RED LED STEADY ON	Ionizing tube replacement alarm that is activated when the replacement hours threshold is reached (factory setting = 14000 h (*) modifiable with optional EVO display)
RED LED FLASHING FAST Ton = 1 second / Toff = 1 second	External alarm. The red led lights up and the JONIX up in device turns off.

(\*) The operating hours threshold of the ionizing tube for cleaning and replacement are parameters that can be changed using the optional display (see chapter 9 "DISPLAY EVO optional").

## 9 - DISPLAY EVO optional

### 9.1 DESCRIPTION OF THE OPERATION KEYS

The optional DISPLAY EVO is an accessory that allows you to modify the vestments highlighted by (\*) in chapters 8.2 "MANAGED COMPONENTS, OPERATION LOGIC AND FACTORY SETTINGS" and 8.3 "ALARM SIGNALLING".

The DISPLAY EVO consists of an LCD display and 6 keys.

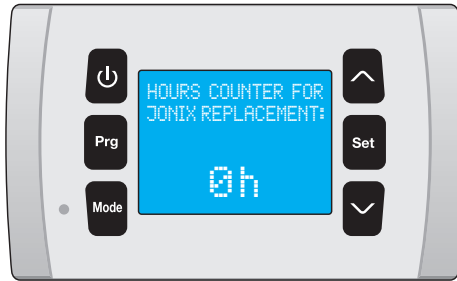








Fig. 22

SYMBOL	KEY	DESCRIPTION
	<b>ON/OFF</b>	Press the key to go back from the various screens to the main screen.
	<b>PROGRAM</b>	Press the PRG key to enter the adjustment screen.
	<b>MODE</b>	Button not used.
	<b>UP</b>	Press the UP key to change the adjustment screens and to increase the numerical values of the editable parameters.
	<b>SET</b>	Press the SET button to confirm the changed parameter values.
	<b>DOWN</b>	Press the DOWN key to change the adjustment screens and to decrease the numerical values of the editable parameters.





If the JONIX up in device is powered but is off (switch ON OFF on 0=OFF) , the message OFF is shown on the EVO DISPLAY.

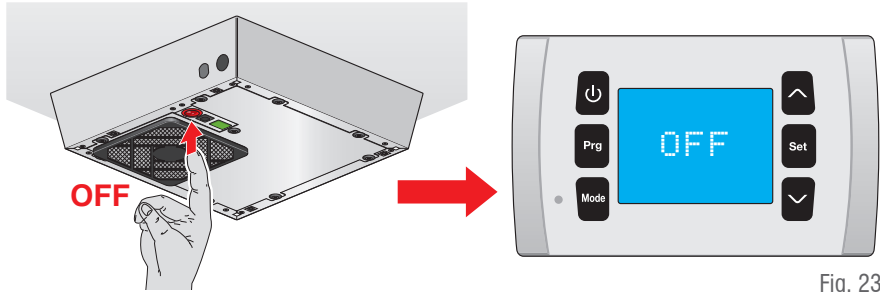


Fig. 23

### 9.1.1 Main screenshot

If the JONIX up in device is powered and turned on (ON OFF switch on I=ON) , the EVO display shows the **main screen**.

- a) Percentage of ventilation speed.
- b) Symbol "ION" present:  
ionizing tube in operation.
- Symbol "ION" not present:  
ionizing tube not in operation.

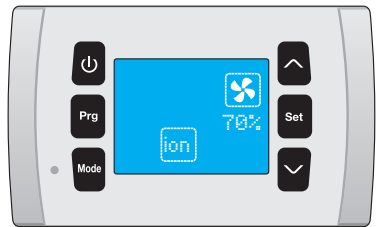



Fig. 24

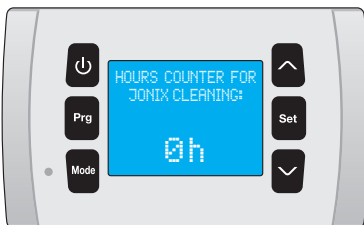
### 9.1.2 Display hours of ionizing tube operation

From the main screen,

push the button 

to display the hours of operation of the ionizing tube since the last reset after **cleaning**.

Fig. 25

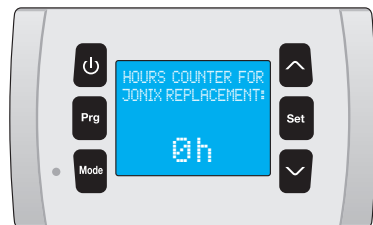


From the main screen,

press  twice

to display the hours of operation of the ionizing tube since the last reset after **replacement**.

Fig. 26



## 9.1.3 Menu regulation

To access the screens that allow you to modify the parameters highlighted by (\*) in chapter 8.2 "MANAGED COMPONENTS, OPERATION LOGIC AND FACTORY SETTINGS",

from the main screen press the **Prg** key and then the **Set** key.

The password entry screen appears.

**The user password to change the vestments is 077.**

Press **^** to change the password value until you reach **077**; keep

press the **^** button to quickly scroll through the numbers from 001 to 999.

Each press of the **^** button corresponds to the increase in value.

Each press of the **v** button corresponds to the decrease of the value.

When the 077 value is reached, press the **Set** button to confirm the password.

The ADJUSTMENT screen appears.

Press the buttons **^** and **v** to change the adjustment screens which have the following order:

- SPEED REGULATION 1 FAN
- SPEED REGULATION 2 FAN
- SPEED REGULATION 3 FAN
- SETTING FUNCTION 2 TIME ON IONIZATION
- SETTING FUNCTION 2 TIME OFF IONIZATION
- SETTING FUNCTION 3 TIME ON IONIZATION
- SETTING FUNCTION 3 TIME OFF IONIZATION
- SETTING FUNCTION 4 TIME ON IONIZATION
- SETTING FUNCTION 4 TIME OFF IONIZATION
- SETTING FUNCTION 4 TIME IONIZATION CYCLE DURATION
- SETTING IONIZING TUBE CLEANING LIMIT HOURS
- SETTING IONIZING TUBE REPLACEMENT LIMIT HOURS
- RESET DEFAULT PARAMETERS

In all the adjustment screens to change the corresponding parameter values:

- 1) press the button **Set**;
- 2) Press the keys **^** and **v** until the desired value is displayed;
- 3) Press the **Set** button to confirm.

Press the **Power** key to return to the main screen.

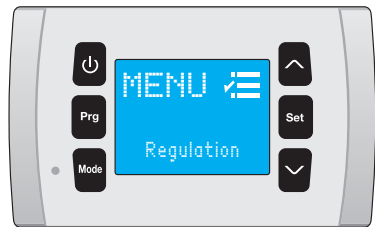


Fig. 27

## 10 - MAINTENANCE

### 10.1 WARNINGS



**BEFORE CARRYING OUT ANY MAINTENANCE OPERATION MAKE SURE THAT THE DEVICE IS NOT AND CANNOT ACCIDENTALLY BE POWERED ELECTRICALLY. YOU MUST THEREFORE UNPLUG THE DEVICE BEFORE CARRYING OUT ANY MAINTENANCE.**

- It is the duty of the user to perform all the maintenance operations on the device listed below.
- If a malfunction not indicated in this manual occurs, disconnect the power supply to the device and consult your dealer and/or the Manufacturer.
- Only trained and qualified personnel can perform maintenance operations.



**For all maintenance operations it is good practice to use Personal Protective Equipment provided for by the regulations in force.**

The frequency of the operations to be performed to ensure proper maintenance of the JONIX up in device depends mainly on the quality of the treated air.

Air can be particularly harmful to non-technical plasma generators if it contains pollutants or aggressive substances in high quantities such as:

- Industrial flue gas
- Salt
- Chemical smoke
- Heavy powders



**By coming into contact with the inside or outer surfaces of the device by means of the air flow or by direct exposure, these substances can lead to a structural and functional failure of the device and of its performance as time passes and without proper, systematic maintenance.**

### 10.2 ROUTINE MAINTENANCE

The JONIX up in needs a reduced maintenance which consists of periodic and regular cleaning or replacement of the non-thermal plasma generator (ionizing tube), cleaning or replacement of the filter and checking the correct operation of the fan.

The JONIX device up in signals the need for maintenance of the non-thermal plasma generator (ionizing tube) by turning on the alarm led (red led):

- red led flashing fast (1 second on and 1 second off) -> cleaning the ionizing tube (see paragraph 10.2.1 "Cleaning the ionizing tube").
- red led always on -> ionizing tube replacement (see paragraph 10.2.4 "Ionizing tube replacement").

## 10.2.1 Cleaning ionizing tubes

The device JONIX up in signals the need to clean the ionizing tube every 1000 hours of operation (factory setting) through the red led that flashes fast, i.e. 1 second on and 1 second off. The 1000 hours of operation can be changed via the optional EVO display (see Chapter 9 "Optional EVO DISPLAY").



Clean the ionizing tubes whenever required.

Fig. 28: Remove the external cover which is fixed with interlocking pins. Pull by grasping the cover sideways to remove it.

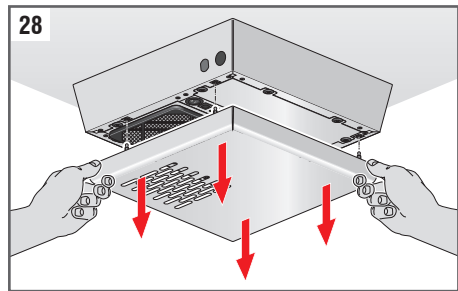


Fig. 29: Turn the device off by turning the O/I switch to the 0 position.

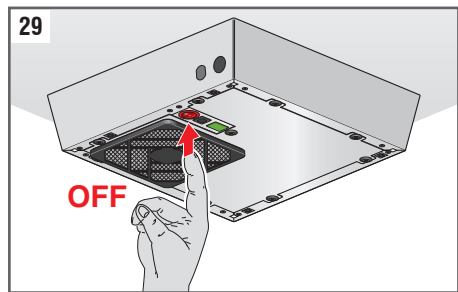


Fig. 30: Disconnect the power supply by acting on the safety thermomagnetic circuit upstream of the device. Make sure that the power supply cannot be accidentally restored.

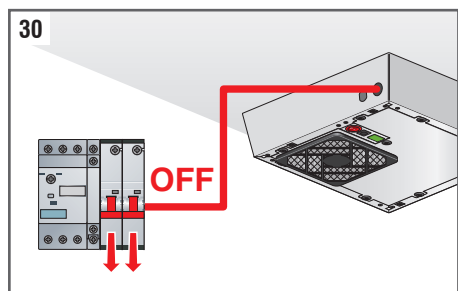


Fig. 31: Unscrew the fixing screws and remove the closing plate.



**Attention, the filter is fixed to the closing plate, make sure not to damage it.**

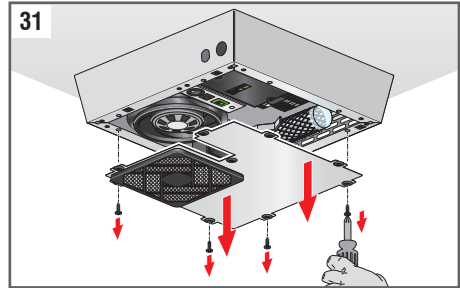


Fig. 32: Gently unscrew the ionizing tube by grasping it at the base (**green part**).



If the operation is difficult, pull the earthing bracket slightly so that it does not make contact with the pipe surface.

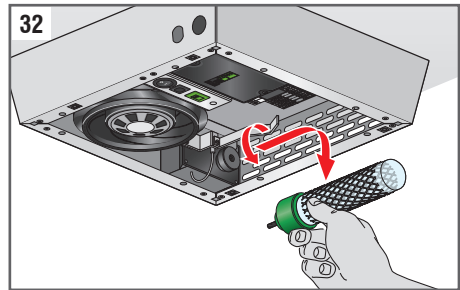
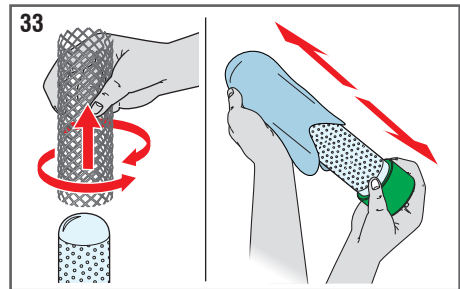


Fig. 33: Remove the mesh surrounding the tube: if this is too difficult, turn the mesh slightly around the glass.

Clean the glass using a damp cloth.



**Do not use liquid cleaners or sprays, soap or similar products.**



Check that the tube is in good conditions: there must not be any cracks or other damage; otherwise it must be replaced. The presence of a whitish layer on the perforated metal sheet inside the glass indicates the need to replace the tube.

**The tubes must usually be replaced within 18 months of use.**

Fig. 34: Wash the mesh under running hot water and dry it thoroughly with a cloth that does not lose fibres.



**Do not put back the mesh on the ionizing tube if it is even partially wet.**

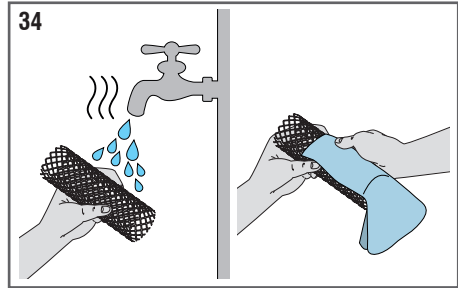


Fig. 35: Put the outer metal mesh back on the glass tube so that it fully overlaps on the internal plate.



**In any case ensure a minimum distance of at least 3mm on the base of the tube.**

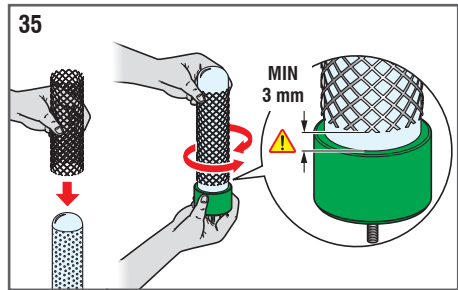
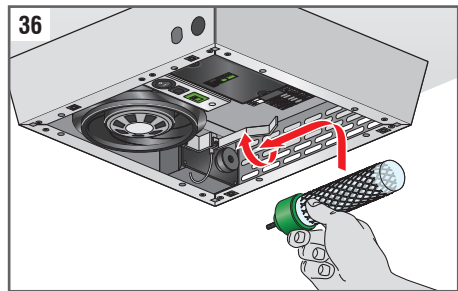


Fig. 36: Gently screw the ionizing tube back on by grasping it at the base (green part). If the operation is difficult, pull the earthing bracket slightly so that it does not make contact with the pipe surface.



**For the replacement code of the new ionizing tube see paragraph 4.2**



Inserting a NEW ionizing tube



**ATTENTION: do not overtighten the screw after reaching its end stop.**



**Check that the earthing spring is in contact with the external mesh once the ionizing tubes have been screwed back into place. Otherwise contact the manufacturer.**

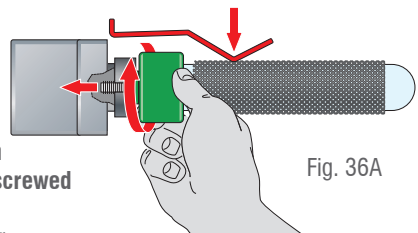


Fig. 36A

Fig. 37: Remount the locking plate by screwing in the fixing screws.

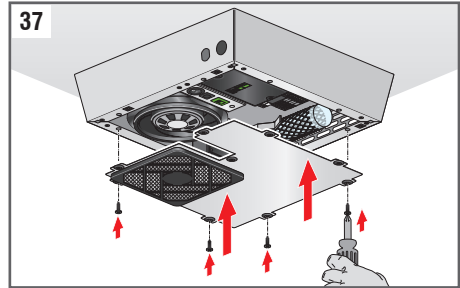


Fig. 38: Act on the safety thermomagnetic circuit upstream of the device to restore the power supply.

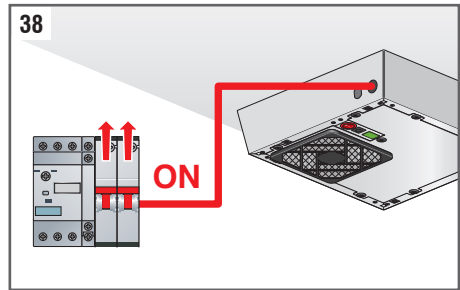


Fig. 39: Set the switch to ON to check for voltage in the device. Check the operation of the device, a slight sizzle from the ionizing tube must be audible and you will hear the air flow generated by the fan.

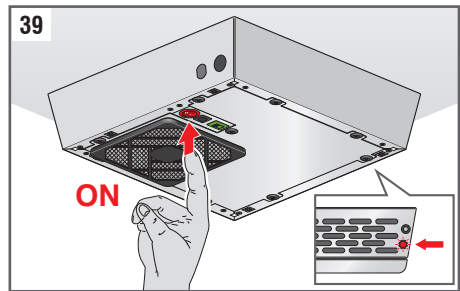


Fig. 40: Keep the reset button pressed for at least 5 seconds until the alarm led (red led) goes out.

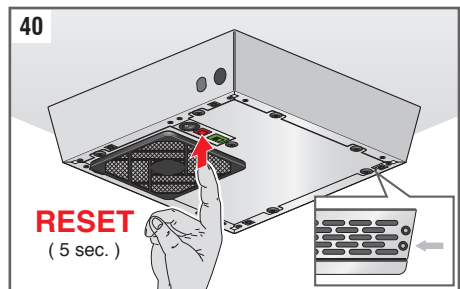


Fig. 41: Replace the external cover by fixing it to the pins.



**ATTENTION:** The perforated ambient air inlet grid must be positioned at the filter.

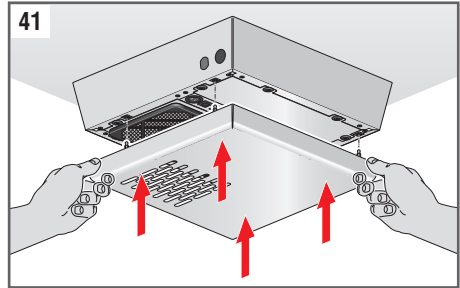
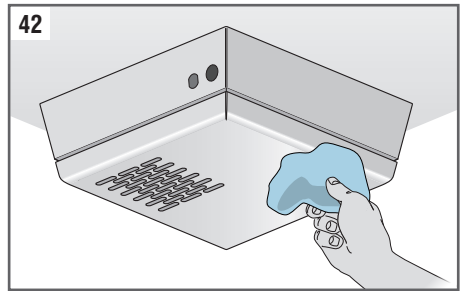


Fig. 42: Clean the outside of the device with a damp microfiber cloth. If the casing is in stainless steel, use specific products for this material.



**Do not use liquid detergents, sprays, soaps or other products directly on the device.**



**In the event that a device malfunction persists, disconnect the device from the mains and contact qualified staff authorized by the manufacturer.**



**Failure to clean the ionizing tube when indicated by the device leads to a drop in system performance.**

## 10.2.2 Cleaning the Filter

Clean the filter at every maintenance of the JONIX up in every time the need is signalled by turning on the alarm led.

In the case of rooms with high quantities of dust, it is advisable to reduce the time required to maintain the device in operation and remove traces of dust and residues that obstruct the air flow.

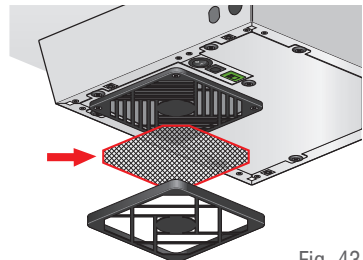


Fig. 43



Fig. 44: Remove the external cover by grasping it sideways and pulling to release it from the device.

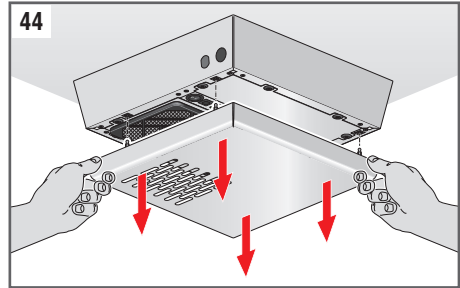


Fig. 45: Turn the device off by turning the O/I switch to the 0 position.

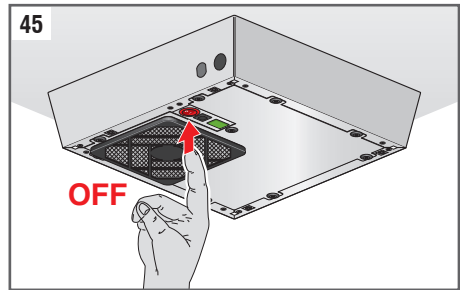


Fig. 46: Remove the filter cover by pressing the sides and pulling towards you.

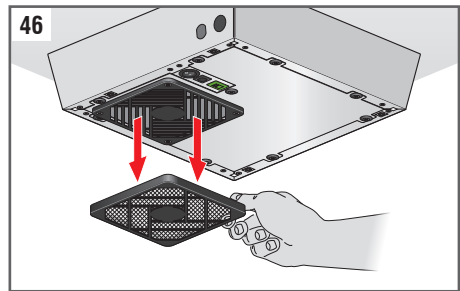


Fig. 47: Wash the mesh filter under running water and dry it with a microfibre cloth.

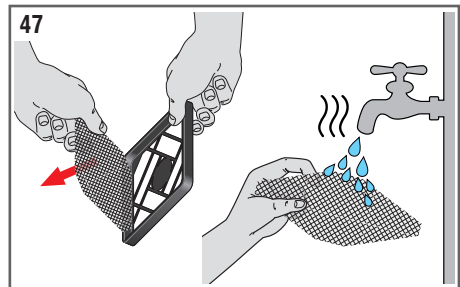


Fig. 48: Use a damp microfibre cloth to wipe the plastic filter cover and the grid incorporated in the closing plate.

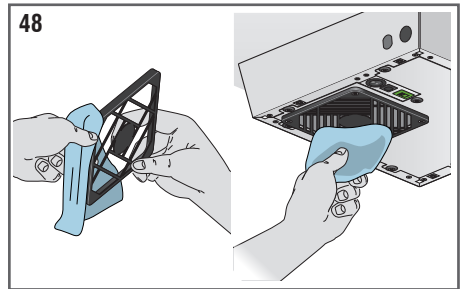


Fig. 49: Put the mesh filter back into the filter cover.

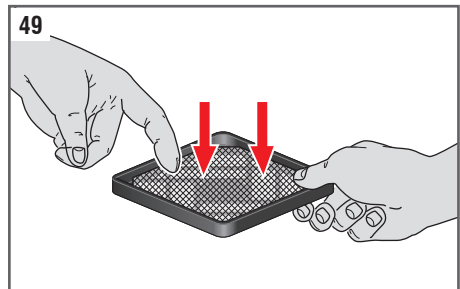


Fig. 50: Reassemble the filter cover with the snap fastening. Press it on the grid incorporated in the closing plate until you feel the snap of the coupling between the parts.

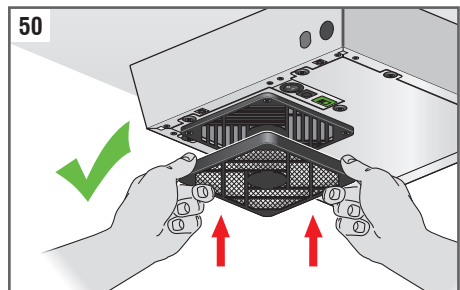


Fig. 51: Set the switch to ON and check for voltage in the device.

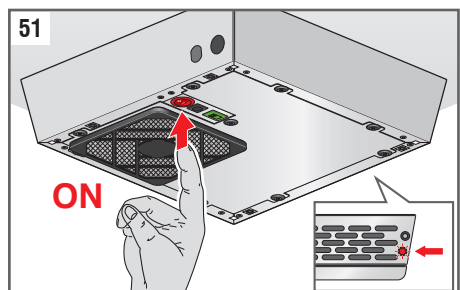
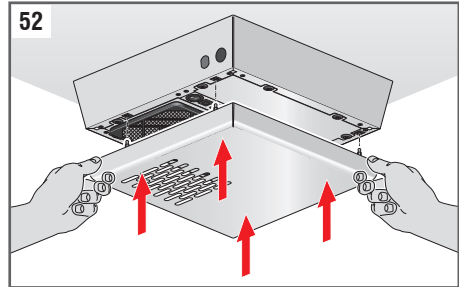


Fig. 52: Replace the external cover by fixing it to the pins.



**ATTENTION:** The perforated ambient air inlet grid must be positioned at the filter.

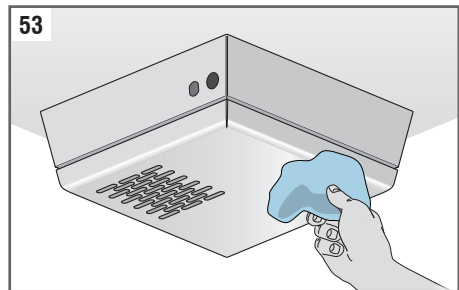


### 10.2.3 External cleaning of the device

Fig. 53: Clean the outside of the device with a damp microfiber cloth. If the casing is in stainless steel, use specific products for this material.



**Do not use liquid detergents, sprays, soaps or other products directly on the device.**



**Pay particular attention to the air passage grid: check that they are not dirty to ensure air passage.**

### 10.2.2 Ionizing tube replacement

The ionizing tube is the component of the device that has deteriorated over time to the point where it needs to be replaced. Components must be replaced when signs of wear appear, indicated by oxide on the internal mesh of the condenser, which will make it turn white, and by the glass looking dull.

The JONIX up in device signals the need to replace the ionizing tube every 14000 hours of operation (factory setting) through the alarm led (red led) on.

The parameter 14000 hours of operation can be changed via the optional EVO display (see chapter 9 "Optional EVO DISPLAY").

Fig. 54: Remove the external cover which is fixed with interlocking pins. Pull by grasping the cover sideways to remove it.

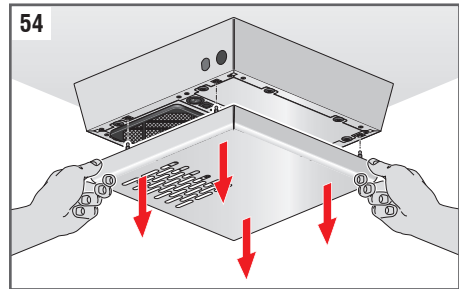


Fig. 55: Turn the device off by turning the O/I switch to the 0 position.

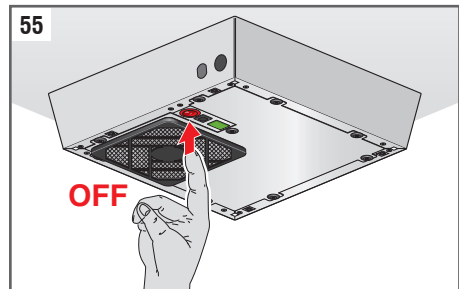


Fig. 56: Disconnect the power supply by acting on the safety thermomagnetic circuit upstream of the device. Make sure that the power supply cannot be accidentally restored.

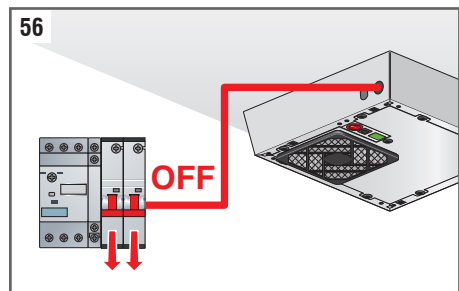


Fig. 57: Unscrew the fixing screws and remove the closing plate.



**Attention, the filter is fixed to the closing plate, make sure not to damage it.**

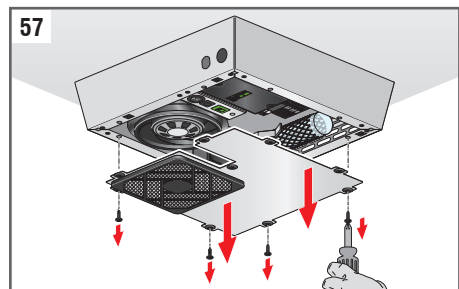


Fig. 58: Gently unscrew the ionizing tube by grasping it at the base (**green part**).



If the operation is difficult, pull the earthing bracket slightly so that it does not make contact with the pipe surface.

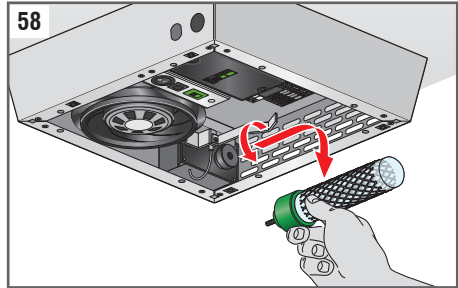


Fig. 59: Gently screw the new ionizing tube on the base (green part). If the operation is difficult, pull the earthing bracket slightly so that it does not make contact with the pipe surface.



**ATTENTION:** do not overtighten the screw after reaching its end stop.



Check that the earthing spring is in contact with the external mesh once the ionizing tubes have been screwed back into place. Otherwise contact the manufacturer.

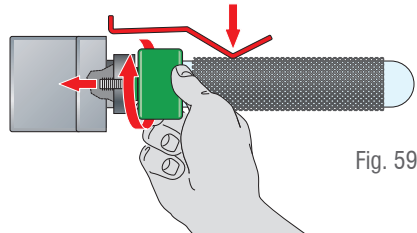
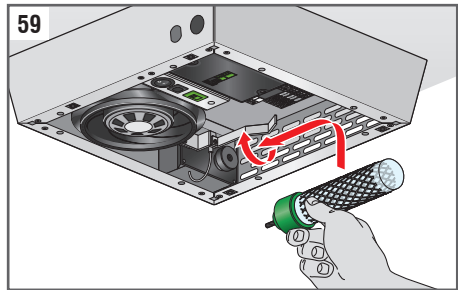


Fig. 59A

Fig. 60: Remount the locking plate by screwing in the fixing screws.

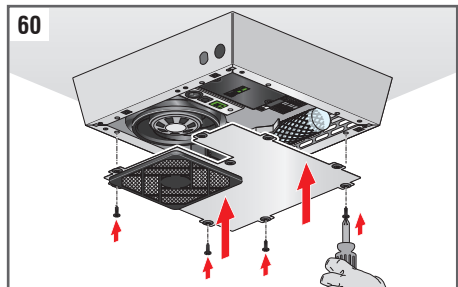


Fig. 61: Act on the safety thermomagnetic circuit upstream of the device to restore the power supply.

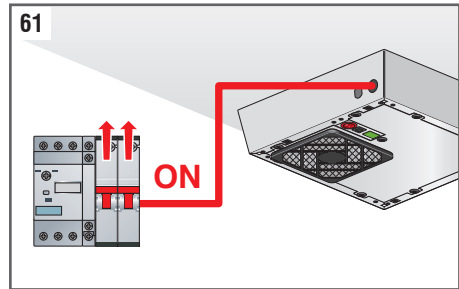


Fig. 62: Set the switch to ON to check for voltage in the device. Check the operation of the device, a slight sizzle from the ionizing tube must be audible and you will hear the air flow generated by the fan.

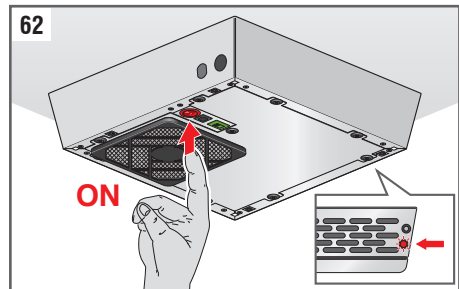


Fig. 63: Keep the reset button pressed for at least 5 seconds until the alarm led (red led) goes out.

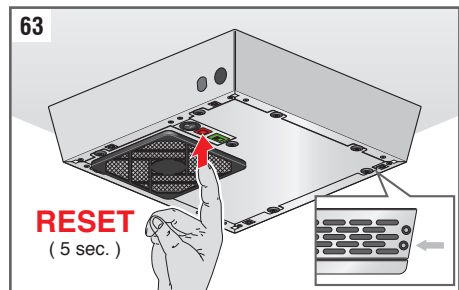


Fig. 64: Replace the external cover by fixing it to the pins.



**ATTENTION:** The perforated ambient air inlet grid must be positioned at the filter.

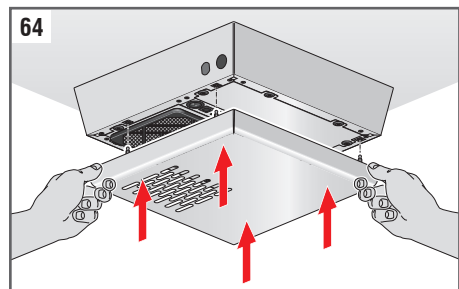
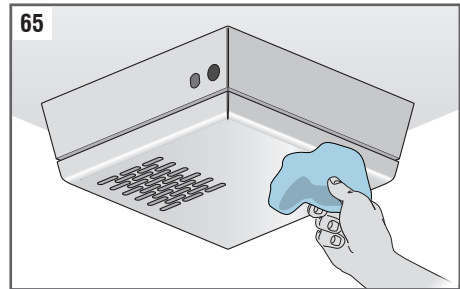


Fig. 65: Clean the outside of the device with a damp microfiber cloth.  
If the casing is in stainless steel, use specific products for this material.



**Do not use liquid detergents, sprays, soaps or other products directly on the device.**



**In the event that a device malfunction persists, disconnect the device from the mains and contact qualified staff authorized by the manufacturer.**



**Failure to clean the ionizing tube when indicated by the device leads to a drop in system performance.**

### 10.3 SPECIAL MAINTENANCE

---



**Any maintenance that does not fall within the operations described as routine maintenance must only be carried out by specialised personnel expressly authorised and trained by the Manufacturer.**

## 11 - CHECKING OPERATION AND POSSIBLE FAULTS (DIAGNOSTICS)

This section summarises the most common problems that may arise when using the unit. Before contacting customer service, make the checks described in the paragraph on diagnostics and check that the alarm led (red led) is not on.

### 11.1 DIAGNOSTICS

PROBLEM	POSSIBLE CAUSE	SOLUTION
The yellow led indicating the operation of the device is off.	Lack of power to the device.	Check that the O/I switch is in position I.
		Check that the electrical connection is correctly made.
		Check that power is present in the distribution mains.
		Check that the electronic card inside the device is not damaged. In this case contact the Manufacturer or distributor.
You can't hear the ionizer sizzle.	Ionizing tube failure.	Follow the instructions in section "10.3 - SPECIAL MAINTENANCE".
	Need for maintenance to the ionizing tube.	Follow the instructions in section "10.2 - ROUTINE MAINTENANCE".
Air ionization does not meet expectations (lack of ionizing effect in the air).	The device settings are not correct with respect to the characteristics and volume of the room to be treated.	Refer to the table in section 6.7 "DEVICE USE" and section 8.2 "MANAGED COMPONENTS, OPERATING LOGIC AND FACTORY SETTINGS" to check the ionization function and fan speed.
	Need for maintenance to the ionizing tube.	Follow the instructions in section "10.2 - ROUTINE MAINTENANCE".
	Fan failure.	Follow the instructions in section "10.3 - SPECIAL MAINTENANCE".
The optional EVO display is off.	Problem with the display power supply line.	Check that the display is correctly connected to the power line and that no electrical safety systems have intervened.

### 11.2 GENERAL DIAGNOSTIC PROVISIONS



**If a malfunction other than that described above occurs, contact the Manufacturer or a Distributor and always quote the part number and serial number on the nameplate of the device.**

Disconnect the power supply to the device and contact the Manufacturer or a dealer for assistance even in the event of a malfunction, even if all procedures in this Operation and Maintenance Manual have been performed correctly.



## 12 - DISPOSAL

When JONIX up in devices are no longer used they must be disposed of in compliance with the regulations in force in the country of installation. The unit consists of the following materials:

- Stainless steel.
- Aluminium.
- Glass.
- Nylon.
- Plastic.
- Paper and Cardboard.
- Wood.



### **MANAGEMENT OF WASTE ELECTRICAL AND ELECTRONIC EQUIPMENT**

This product falls within the scope of Directive 2012/19/EU on the management of waste electrical and electronic equipment (WEEE). The appliance must not be disposed of with household waste as it consists of various materials that can be recycled at appropriate facilities. Inform yourself through your local authority as to the location of the ecological platforms for receiving the product for disposal and its subsequent proper recycling. The product is not potentially dangerous for human health and the environment, as it does not contain harmful substances as per Directive 2011/65/EU (RoHS), but if left in the environment it has a negative impact on the ecosystem. Read the instructions carefully before using the unit for the first time.

It is recommended that the product should not be used for any other purpose than that for which it was intended, as there is a risk of electric shock if used improperly.

## NOTES

.....

.....

.....

.....

## WARRANTY CONDITIONS

The Manufacturer warrants repairs to the device if the system is found to be defective in materials or in the manufacture under the conditions set out below:

1. The warranty starts from the date of purchase and lasts for 12 months.
2. No warranty is provided for the breakage of the ionizer tube glass.
3. Failure to comply with the instructions for use and maintenance described will invalidate the warranty.
4. The buyer is entitled to a 12-month warranty.
5. The warranty is only valid if the system is purchased from an authorised retailer.
6. The warranty includes free repair or replacement of the components which are faulty due to incorrect manufacture and does not include the replacement of the device under any circumstances.
7. Warranty repairs are carried out solely by the retailer or the manufacturer.
8. The warranty does not cover systems that are damaged or faulty due to: replacement of components or accessories with others of a type that is not explicitly approved by the manufacturer, interventions carried out by unauthorised or unqualified staff, non-compliance with the environmental conditions, neglect, lightning, floods, fire, acts of war, riots. Malfunctions due to incorrect installation are not covered.
9. The warranty does not cover systems with illegible, missing or altered serial numbers or labels.
10. All transport costs and the relative risks are under the purchaser's responsibility.
11. Carrying out one or several repairs during the warranty period does not change the warranty expiry date.
12. The manufacturer disclaims any liability for any direct or indirect damage caused to people or property due to defects resulting from the product being used incorrectly.

The user authorises the manufacturer and related customer support services to store and use personal data in accordance with GDPR 2019/679. The user may exercise your rights at any time with regard to the data controller (JONIX S.r.l.).

**DECLARATION OF CONFORMITY**



2006/42/EC Annex II A

**JONIX S.R.L.**

REGISTERED OFFICE. Viale Spagna 31/33 35020 Tribano (PD)

SCIENTIFIC HEADQUARTERS Via Tegulaia 10/b - 56121 Pisa

OPERATIONAL HEADQUARTERS: Via Romagnoli, 12/A – 40010 Bentivoglio (BO)

**declares that  
the product identified below**

DESCRIPTION	Device for active sanitization and air purification
TYPE AND TRADE NAME	<b>JONIX UP IN</b>
CODE	<b>XXXXXXX</b>
SERIAL NUMBER	<b>XXXXXXX</b>

**COMPLIES with the Directives:**

**2006/42/EC** OF THE EUROPEAN PARLIAMENT AND OF THE COUNCIL of 17 May 2006 on **machinery**, and amending Directive 95/16/EC (recast)

**2014/30/EU** OF THE EUROPEAN PARLIAMENT AND OF THE COUNCIL of 26 February 2014 on the harmonisation of the laws of the Member States relating to the electromagnetic compatibility

**2011/65/EU** OF THE EUROPEAN PARLIAMENT AND OF THE COUNCIL of 8 June 2011 on the restriction of the use of certain hazardous substances in electrical and electronic equipment

**2012/19/EU** OF THE EUROPEAN PARLIAMENT AND OF THE COUNCIL of 4 July 2012 on the waste electronic equipment (WEEE)

harmonised standards have also been applied

UNI EN ISO 12100:2010

CEI EN 60204-1:2016

and authorizes

mr. Mauro Mantovan, boulevard Spain, 31/33 - 35020 Tribano (PD)


to build the technical file

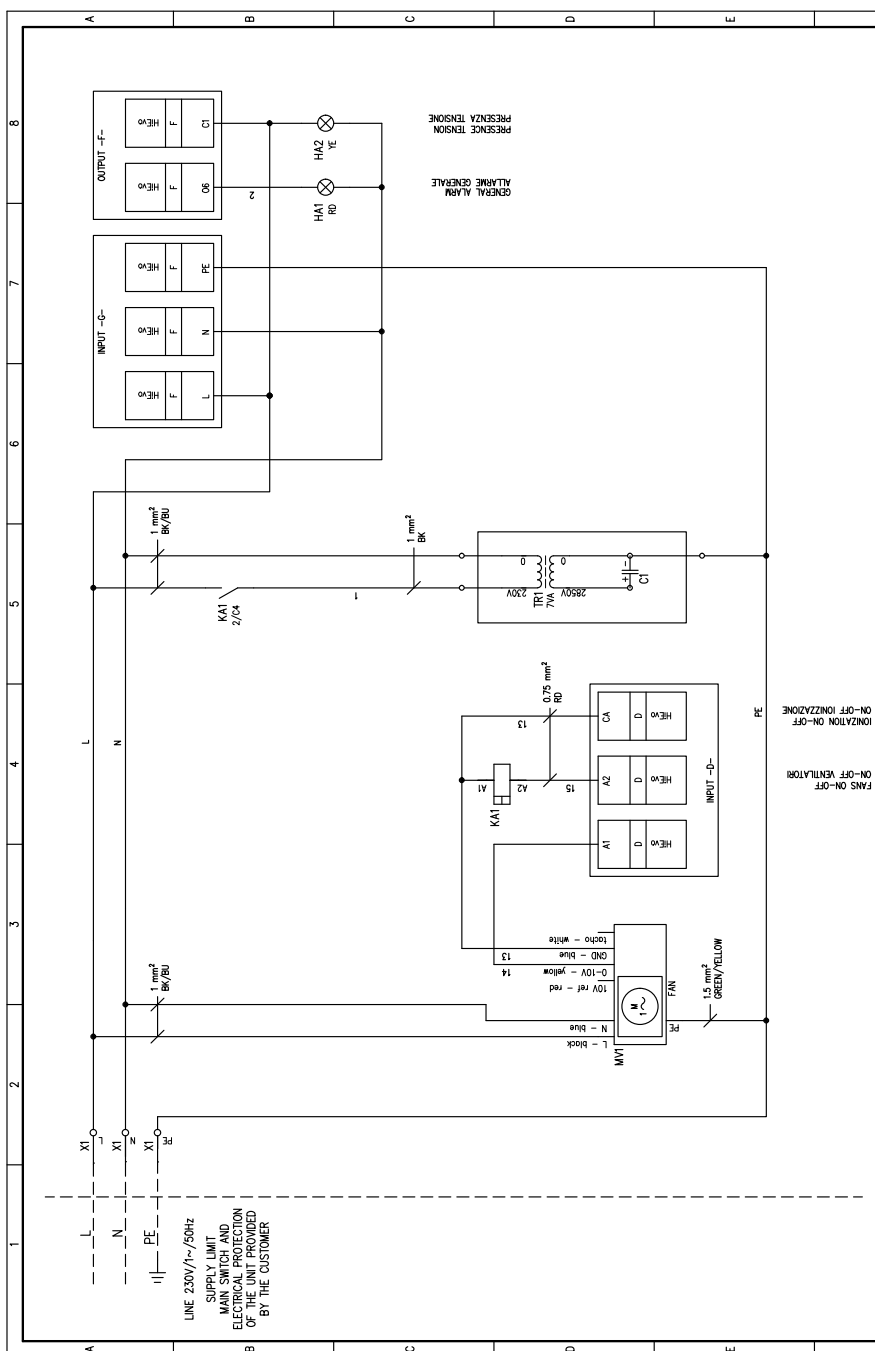
Tribano (PD), li 31/07/2020

General manager: Mauro Mantovan

# ANNEXES

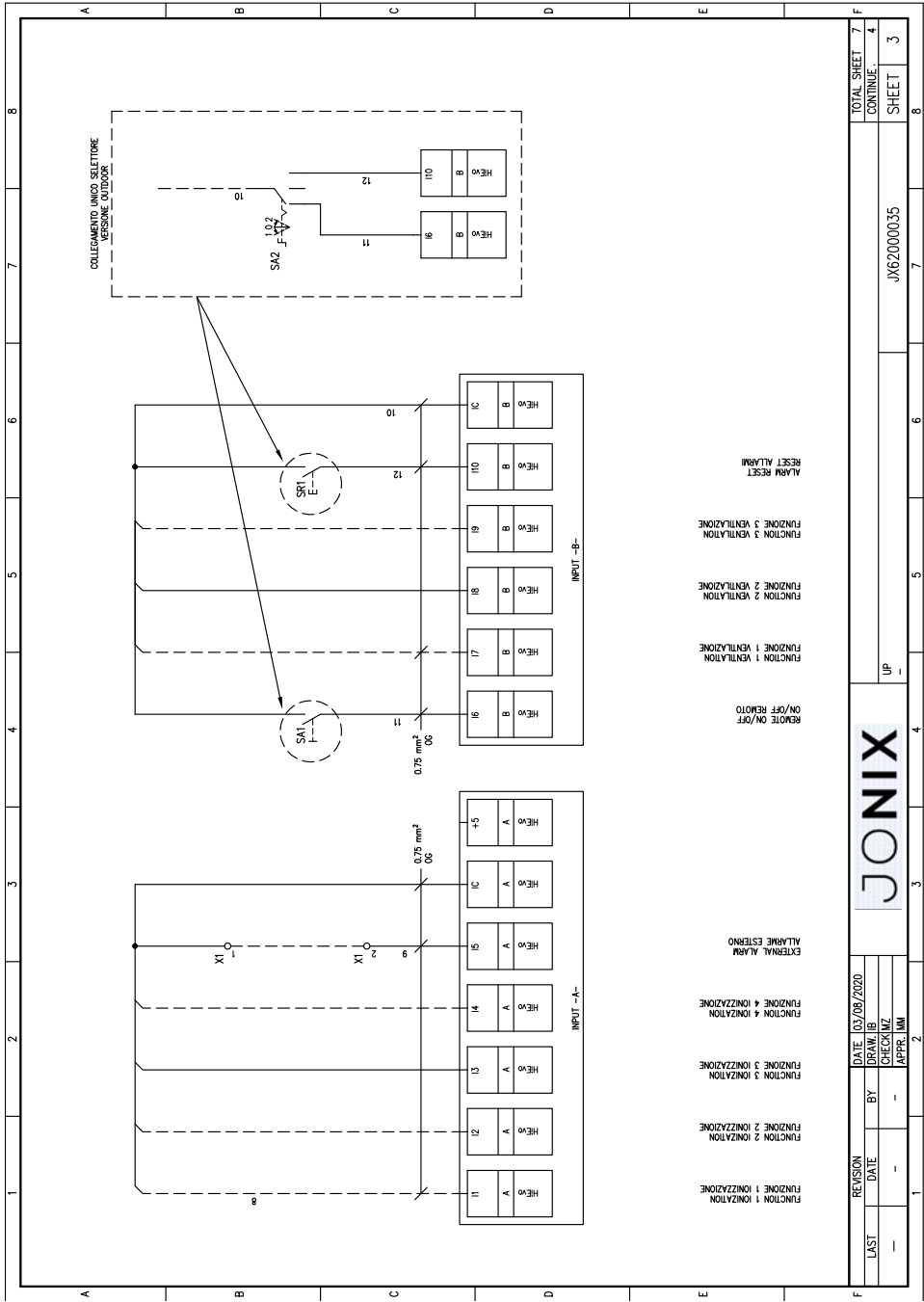
JONIX up in ELECTRIC PLANT

1		2		3		4		5		6		7		8	
<p style="text-align: center;">  </p> <p style="text-align: center;">                 Manufactured by HIRef S.p.a.                  Viale Spagna, 31/33                  35020 Tribano (Padova) Italy                  tel: ++39 049 9588511                  fax: ++39 049 9588522                  web: www.hiref.it                  e@mail: info@hiref.it             </p>															
Serie		UP		70JONIXUP		Model									
Drawing code		JX62000035		Controller		HiEvo									
Power supply		230V/1~/50-60Hz		Auxiliary supply		-		-							
Created by		IB		Revision by		-		-		Index		-			
Date		03/08/2020		On											
Max power (kW)		0.03		FLA (A)		0.3		LRA (A)		-					
Main protection		-													
REVISION		DATE		DATE		BY		DATE		DATE		DATE		DATE	
LAST		-		-		-		-		-		-		-	
DRAW		IB		CHECK		M		APP		M					
DATE		03/08/2020													
TOTAL SHEET		7		CONTINUE		2		SHEET		1					
JONIX		UP		JX62000035											



LINE 230V/1~/50Hz  
 SUPPLY LIMIT  
 MAIN SWITCH AND  
 ELECTRICAL PROTECTION  
 OF THE UNIT PROVIDED  
 BY THE CUSTOMER

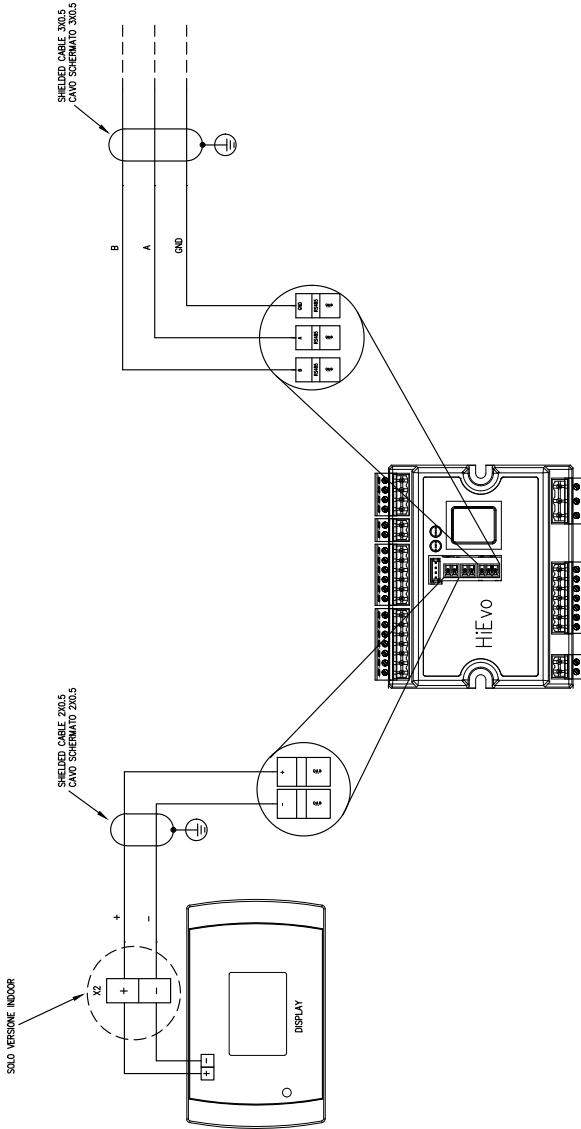
REVISION	DATE	03/09/2020
LAST	BY	DRAW FMI
	DATE	CHECK MZ
		APPR. IMI
		UP
		JX62000035
TOTAL SHEET	7	
CONTINUE	3	
SHEET	2	



REVISION		DATE	03/09/2020	DATE	03/09/2020	DRAW. BY	IB	CHECKED BY	-	APPR. BY	IMI	UP	JX62000035	TOTAL SHEET	7	TOTAL SHEET	7
LAST	-	DATE	-													CONTINUE	4
														SHEET	3		



RS485 AND DISPLAY CONNECTION (OPTIONAL)



REVISION	DATE	DATE	03/09/2020
LAST	BY	DRAW	IB
-	-	CHECK	MZ
-	-	APPR	MM

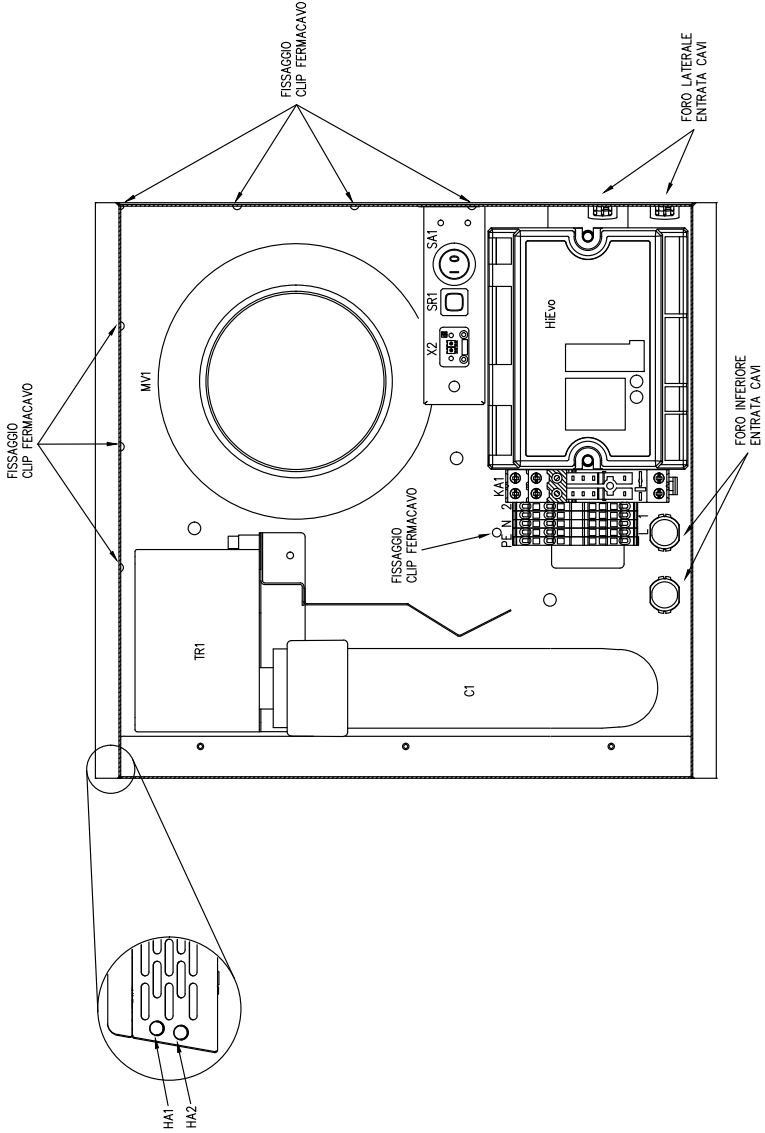
**JONIX**

UP

JX62000035

TOTAL SHEET	7
CONTINUE	5
SHEET	4

ELECTRICAL PANEL LAYOUT model INDOOR



REVISION	DATE	DATE	03/09/2020
LAST	BY	DRAW	IB
-	-	CHECK	NZ
-	-	APPR	NM

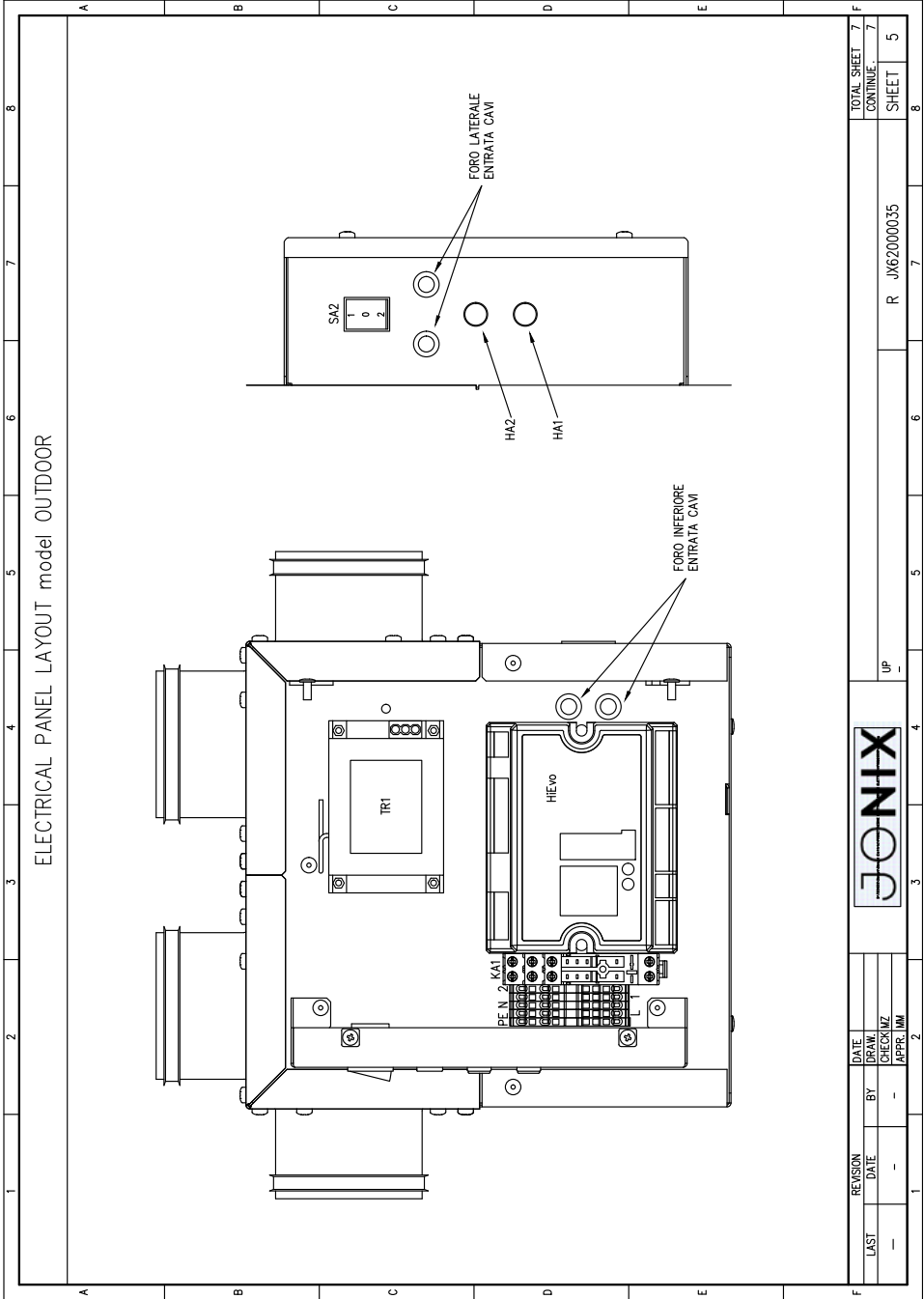


UP

JX62000035

TOTAL SHEET	7
CONTINUE	6
SHEET	5





REVISION	DATE	DATE	DATE	DATE	DATE	DATE	DATE	DATE	DATE
LAST	—	—	—	—	—	—	—	—	—
	BY	BY	BY	BY	BY	BY	BY	BY	BY
	DATE	DATE	DATE	DATE	DATE	DATE	DATE	DATE	DATE
	CHECK/MZ	CHECK/MZ	CHECK/MZ	CHECK/MZ	CHECK/MZ	CHECK/MZ	CHECK/MZ	CHECK/MZ	CHECK/MZ
	APPR. IMU	APPR. IMU	APPR. IMU	APPR. IMU	APPR. IMU	APPR. IMU	APPR. IMU	APPR. IMU	APPR. IMU
<b>JONIX</b>									
UP									
R JX62000035									
							TOTAL SHEET	7	7
							CONTINUE	7	7
							SHEET	5	5

1	2	3	4	5	6	7	8	
REVISONS LIST								
A	REVISION /	DATE 08/09/2020	MODIFICATIONS					BY IB
		FIRST EMISSION						
B								
C								
D								
E								
F	LAST -	REVISION DATE -	BY -	<b>JONIX</b>			TOTAL SHEET CONTINUE SHEET	
				DATE 03/09/2020	DRAW IB	CHECK M/Z	7	
				APPR. MM	UP -	JX6200035	7	
F								8

## NOTES

A series of 18 horizontal dotted lines for writing notes.

# JONIX

pure living

JONIX srl  
support@jonixair.com  
www.jonixair.com



Registered office  
Viale Spagna 31/33  
35020 Tribano (PD) - Italy  
tel +39 049 9588511  
fax +39 049 9588522

Scientific headquarters  
Via Tegulaia 10/b  
56121 Pisa - Italy  
tel +39 050 985165

Operational headquarters  
Via Romagnoli 12/a  
40010 Bentivoglio (BO) - Italy